

Recombinant Human CACNB4 Protein, GST-Tagged

Cat. No. CACNB4-0274H **Lot. No.** (See product label)

SPECIFICATION

Product Overview	Human CACNB4 full-length ORF (NP_000717.2, 1 a.a. - 520 a.a.) recombinant protein with GST-tag at N-terminal.
Species	Human
Source	Wheat Germ
Description	<p>This gene encodes a member of the beta subunit family of voltage-dependent calcium channel complex proteins. Calcium channels mediate the influx of calcium ions into the cell upon membrane polarization and consist of a complex of alpha-1, alpha-2/delta, beta, and gamma subunits in a 1:1:1:1 ratio. Various versions of each of these subunits exist, either expressed from similar genes or the result of alternative splicing. The protein encoded by this locus plays an important role in calcium channel function by modulating G protein inhibition, increasing peak calcium current, controlling the alpha-1 subunit membrane targeting and shifting the voltage dependence of activation and inactivation. Certain mutations in this gene have been associated with idiopathic generalized epilepsy (IGE), juvenile myoclonic epilepsy (JME), and episodic ataxia, type 5. [provided by RefSeq, Aug 2016]</p>
Molecular Mass	84.6 kDa
AA Sequence	<p>MSSSSYAKNGTADGPHSPTSQVARGTTTTRRSRLKRSDGTTTSTSFILRQGSADSYT SRPSDSVSLEEDREAIRQEREQQAAIQLERAKSKPVAFAVKTNVSYCGALDEDVPV PSTAISFDAKDFLHIKEKYNNDDWWIGRLVKEGCEIGFIPSPLRLENIRIQQEQRGRFH</p>

 Tel: 1-631-559-9269 1-516-512-3133

 Email: info@creative-biomart.com  Fax: 1-631-938-8127

 45-1 Ramsey Road, Shirley, NY 11967, USA

GGKSSGNSSSSLGEMVSGTFRATPTSTAKQKQKVTEHIPPYDVVPSMRPVVLVGPS
 LKGYEVTDMMQKALFDLKHFRFDGRISITRVTADISLAKRSVLNPNPSKRAIIERSNTRS
 SLAEVQSEIERIFELARSLQLVVLADDTINHPAQLIKTSLAPIIVHVKVSSPKVLQRLIKS
 RGKSQSKHLNVQLVAADKLAQCPEMFDVILDENQLEDACEHLGEYLEAYWRATHT
 TSSTPMTPLLGRNLGSTALLSPYPTAISGLQSQRMRHSNHSTENSPIERRSLMTSDEN
 YHNERARKSRNRLSSSSQHSRDHYPLVEEDYPDSYQDQTYKPHRNRGSPGGYSHD
 SRHRL

Applications
 Enzyme-linked Immunoabsorbent Assay
 Western Blot (Recombinant protein)
 Antibody Production
 Protein Array

Notes
 Best use within three months from the date of receipt of this protein.

Storage
 Store at -80 centigrade. Aliquot to avoid repeated freezing and thawing.

Storage Buffer
 50 mM Tris-HCl, 10 mM reduced Glutathione, pH=8.0 in the elution buffer.

GENE INFORMATION

Gene Name
 CACNB4 calcium channel,voltage-dependent,beta 4 subunit [Homo sapiens]

Official Symbol
 CACNB4

Synonyms
 CACNB4;Cavβ4 Calcium Channel;EA5;EJM;calcium channel,voltage-dependent,beta 4 subunit;CAB4;EIG9;EJM4;EJM6;CACNLB4;voltage-dependent L-type calcium channel subunit beta-4;calcium channel voltage-dependent subunit beta 4;dihydropyridine-sensitive L-type,cal

Gene ID
 785

Tel: 1-631-559-9269 1-516-512-3133

Email: info@creative-biomart.com Fax: 1-631-938-8127

45-1 Ramsey Road, Shirley, NY 11967, USA

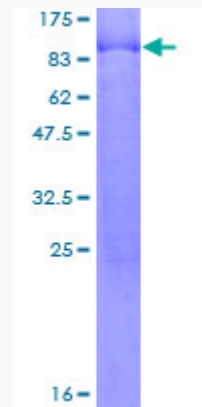
mRNA Refseq [NM_000726](#)

Protein Refseq [NP_000717](#)

MIM [601949](#)

UniProt ID [O00305](#)

**Quality Control
Testing**



12.5% SDS-PAGE Stained with Coomassie Blue.

 Tel: 1-631-559-9269 1-516-512-3133

 Email: info@creative-biomart.com  Fax: 1-631-938-8127

 45-1 Ramsey Road, Shirley, NY 11967, USA