

Recombinant Human CACNG3 Protein, GST-Tagged

Cat. No. CACNG3-0276H Lot. No. (See product label)

SPECIFICATION

Product Overview	Human CACNG3 partial ORF (NP_006530, 199 a.a. - 297 a.a.) recombinant protein with GST-tag at N-terminal.
Species	Human
Source	Wheat Germ
Description	The protein encoded by this gene is a type I transmembrane AMPA receptor regulatory protein (TARP). TARPs regulate both trafficking and channel gating of the AMPA receptors. This gene is part of a functionally diverse eight-member protein subfamily of the PMP-22/EMP/MP20 family. This gene is a susceptibility locus for childhood absence epilepsy. [provided by RefSeq, Dec 2010]
Molecular Mass	36.63 kDa
AA Sequence	IYIEKHQQLRAKSHSEFLKKSTFARLPPYRYRFRRRSSSRSTEPRSRDLSPISKGFHT IPSTDISMFTLSRDPSKITMGTLNLSDRDHAFLQFHNSTPK
Applications	Enzyme-linked Immunoabsorbent Assay Western Blot (Recombinant protein) Antibody Production Protein Array
Notes	Best use within three months from the date of receipt of this protein.

 Tel: 1-631-559-9269 1-516-512-3133

 Email: info@creative-biomart.com  Fax: 1-631-938-8127

 45-1 Ramsey Road, Shirley, NY 11967, USA

Storage Store at -80 centigrade. Aliquot to avoid repeated freezing and thawing.

Storage Buffer 50 mM Tris-HCl, 10 mM reduced Glutathione, pH=8.0 in the elution buffer.

GENE INFORMATION

Gene Name CACNG3 calcium channel, voltage-dependent, gamma subunit 3 [Homo sapiens]

Official Symbol CACNG3

Synonyms CACNG3; calcium channel, voltage-dependent, gamma subunit 3; voltage-dependent calcium channel gamma-3 subunit; TARP gamma-3; voltage-gated calcium channel gamma subunit; transmembrane AMPAR regulatory protein gamma-3; neuronal voltage-gated calcium channel gamma-3 subunit;

Gene ID 10368

mRNA Refseq NM_006539

Protein Refseq NP_006530

MIM 606403

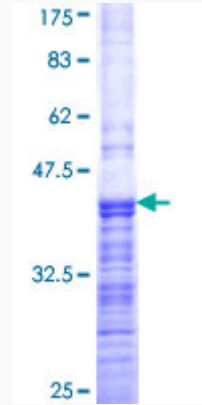
UniProt ID O60359

 Tel: 1-631-559-9269 1-516-512-3133

 Email: info@creative-biomart.com  Fax: 1-631-938-8127

 45-1 Ramsey Road, Shirley, NY 11967, USA

**Quality Control
Testing**



12.5% SDS-PAGE Stained with Coomassie Blue.

 Tel: 1-631-559-9269 1-516-512-3133

 Email: info@creative-biomart.com  Fax: 1-631-938-8127

 45-1 Ramsey Road, Shirley, NY 11967, USA