

Recombinant Human CACNG6 Protein, GST-Tagged

Cat. No. CACNG6-0278H Lot. No. (See product label)

SPECIFICATION

Product Overview	Human CACNG6 full-length ORF (NP_665813.1, 1 a.a. - 260 a.a.) recombinant protein with GST-tag at N-terminal.
Species	Human
Source	Wheat Germ
Description	Voltage-dependent calcium channels are composed of five subunits. The protein encoded by this gene represents one of these subunits, gamma, and is one of two known gamma subunit proteins. This particular gamma subunit is an integral membrane protein that is thought to stabilize the calcium channel in an inactive (closed) state. This gene is part of a functionally diverse eight-member protein subfamily of the PMP-22/EMP/MP20 family and is located in a cluster with two family members that function as transmembrane AMPA receptor regulatory proteins (TARPs). Alternative splicing results in multiple transcript variants. Variants in this gene have been associated with aspirin-intolerant asthma. [provided by RefSeq, Dec 2010]
Molecular Mass	54.5 kDa
AA Sequence	MMWSNFFLQEENRRRGAAGRRAHGQGRSGLTPEREGKVKLALLLAAVGATLAVL SVGTEFWVELNTYKANGSAVCEAAHLGLWKACTKRLWQADVPVDRDTCGPAELPG EANCYTFKFFTTGENARIFQRRTTKKEVNAAAIAVLGLAVMALGCLCIIMVLSKGAEF LLRVGAVCFGLSGLLLLVSLEVFRHSVRALLQRVSPPEPPAPRLTYEYSWSLGCQVGV

 Tel: 1-631-559-9269 1-516-512-3133

 Email: info@creative-biomart.com  Fax: 1-631-938-8127

 45-1 Ramsey Road, Shirley, NY 11967, USA

AGLILLLGAGCFLLLTLPSPWPWGSLCPKRGHRAT

Applications

Enzyme-linked Immunoabsorbent Assay
 Western Blot (Recombinant protein)
 Antibody Production
 Protein Array

Notes

Best use within three months from the date of receipt of this protein.

Storage

Store at -80 centigrade. Aliquot to avoid repeated freezing and thawing.

Storage Buffer

50 mM Tris-HCl, 10 mM reduced Glutathione, pH=8.0 in the elution buffer.

GENE INFORMATION

Gene Name

CACNG6 calcium channel, voltage-dependent, gamma subunit 6 [Homo sapiens]

Official Symbol

CACNG6

Synonyms

CACNG6; calcium channel, voltage-dependent, gamma subunit 6; Calcium Voltage-Gated Channel Auxiliary Subunit Gamma 6; Neuronal Voltage-Gated Calcium Channel Gamma-6 Subunit; Calcium Channel, Voltage-Dependent, Gamma Subunit 6

Gene ID

59285

mRNA Refseq

NM_145815

Protein Refseq

NP_665814

MIM

606898

 Tel: 1-631-559-9269 1-516-512-3133

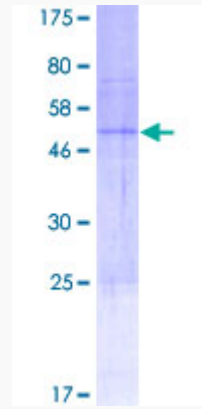
 Email: info@creative-biomart.com  Fax: 1-631-938-8127

 45-1 Ramsey Road, Shirley, NY 11967, USA

UniProt ID

Q9BXT2

Quality Control
Testing



12.5% SDS-PAGE Stained with Coomassie Blue.

 Tel: 1-631-559-9269 1-516-512-3133

 Email: info@creative-biomart.com  Fax: 1-631-938-8127

 45-1 Ramsey Road, Shirley, NY 11967, USA