

Recombinant Human CAD protein, His&Myc-tagged

Cat. No. CAD-5857H Lot. No. (See product label)

SPECIFICATION

Product Overview	Recombinant Human CAD protein(P27708)(1456-1846aa), fused with N-terminal His tag and C-terminal Myc tag, was expressed in E.coli.
Species	Human
Source	E.coli
ProteinLength	1456-1846aa
Form	If the delivery form is liquid, the default storage buffer is Tris/PBS-based buffer, 5%-50% glycerol. If the delivery form is lyophilized powder, the buffer before lyophilization is Tris/PBS-based buffer, 6% Trehalose, pH 8.0.
Molecular Mass	50.1 kDa
Purity	Greater than 90% as determined by SDS-PAGE.
Storage	Store at -20°C/-80°C upon receipt, aliquoting is necessary for mutiple use. Avoid repeated freeze-thaw cycles.
Reconstitution	We recommend that this vial be briefly centrifuged prior to opening to bring the contents to the bottom. Please reconstitute protein in deionized sterile water to a concentration of 0.1-1.0 mg/mL. We recommend to add 5-50% of glycerol (final concentration) and aliquot for long-term storage at -20°C/-80°C.

 Tel: 1-631-559-9269 1-516-512-3133

 Email: info@creative-biomart.com  Fax: 1-631-938-8127

 45-1 Ramsey Road, Shirley, NY 11967, USA



AA Sequence

MTSQKLVRLPGLIDVHVHLREPPGGTHKEDFASGTAAALAGGITMVCAMPNTRPPIID
APALALAQKLAEAGARCDFALFLGASSENAGTLGTVAGSAAGLKLYLNETFSELRLD
SVVQWMEHFETWPSHLP IVAHAEQQTVAAVLMVAQLTQRSVHICHVARKEEILLIKA
AKARGLPVTCEVAPHHLFLSHDDLRLGPGKGEVRPELGSRQDVEALWENMAVIDC
FASDHAPHTLEEKCGSRPPPGFPLETMLPLLLTAVSEGRLSLDLLQRLHHPRI
FHLPPQEDTYVEVDLEHEWTIPSHMPFSKAHWTPFEGQKVKGTVRRVLRGEVAYI
DGQVLVPPGYGQDVRKWPQGAVPQLPPSAPATSEMTTTTPERPRRGIPGLPD

GENE INFORMATION

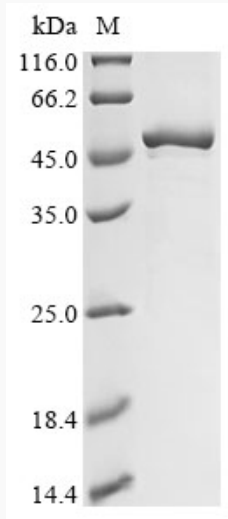
Gene Name	CAD carbamoyl-phosphate synthetase 2, aspartate transcarbamylase, and dihydroorotase [Homo sapiens]
Official Symbol	CAD
Synonyms	CAD; carbamoyl-phosphate synthetase 2, aspartate transcarbamylase, and dihydroorotase; CAD protein; CAD trifunctional protein; multifunctional protein CAD;
Gene ID	790
mRNA Refseq	NM_004341
Protein Refseq	NP_004332
MIM	114010
UniProt ID	P27708

Tel: 1-631-559-9269 1-516-512-3133

Email: info@creative-biomart.com Fax: 1-631-938-8127

45-1 Ramsey Road, Shirley, NY 11967, USA

SDS-PAGE



 Tel: 1-631-559-9269 1-516-512-3133

 Email: info@creative-biomart.com  Fax: 1-631-938-8127

 45-1 Ramsey Road, Shirley, NY 11967, USA