

Recombinant Human CADM1 Protein, GST-Tagged

Cat. No. CADM1-0282H Lot. No. (See product label)

SPECIFICATION

Product Overview	Human CADM1 partial ORF (NP_055148, 151 a.a. - 250 a.a.) recombinant protein with GST-tag at N-terminal.
Species	Human
Source	Wheat Germ
Description	CADM1 (Cell Adhesion Molecule 1) is a Protein Coding gene. Diseases associated with CADM1 include Retroperitoneal Fibrosis and Lung Cancer. Among its related pathways are Natural Killer Cell Receptors: Human Target Cell – NK Cell Ligand-Receptor Interactions and Cell junction organization. GO annotations related to this gene include protein homodimerization activity and PDZ domain binding. An important paralog of this gene is CADM2.
Molecular Mass	36.74 kDa
AA Sequence	IQRDTAVEGEEIEVNCTAMASKPATTIRWFKGNTELKKGKSEVEEWSDMYTVTSQLM LKVHKEDDGVPVICQVEHPAVTGNLQTQRYLEVQYKQPQVHIQMT
Applications	Enzyme-linked Immunoabsorbent Assay Western Blot (Recombinant protein) Antibody Production Protein Array
Notes	Best use within three months from the date of receipt of this protein.

 Tel: 1-631-559-9269 1-516-512-3133

 Email: info@creative-biomart.com  Fax: 1-631-938-8127

 45-1 Ramsey Road, Shirley, NY 11967, USA

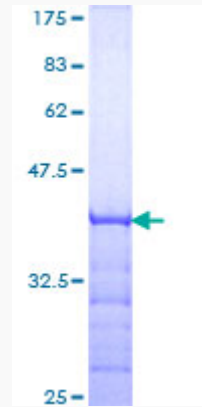
Storage	Store at -80 centigrade. Aliquot to avoid repeated freezing and thawing.
Storage Buffer	50 mM Tris-HCl, 10 mM reduced Glutathione, pH=8.0 in the elution buffer.
GENE INFORMATION	
Gene Name	CADM1 cell adhesion molecule 1 [Homo sapiens]
Official Symbol	CADM1
Synonyms	CADM1; cell adhesion molecule 1; IGSF4, immunoglobulin superfamily, member 4, TSLC1, tumor suppressor in lung cancer 1; BL2; IGSF4A; Necl 2; NECL2; nectin like 2; RA175; ST17; SYNCAM; SYNCAM1; TSLC-1; nectin-like 2; nectin-like protein 2; truncated CADM1 protein; TSLC1/Nectin-like 2/IGSF4; synaptic cell adhesion molecule; tumor suppressor in lung cancer 1; immunoglobulin superfamily member 4; immunoglobulin superfamily, member 4; spermatogenic immunoglobulin superfamily; immunoglobulin superfamily, member 4D variant 2; IGSF4; TSLC1; Necl-2; sgIGSF; sTSLC-1; synCAM1; MGC51880; MGC149785; DKFZp686F1789;
Gene ID	23705
mRNA Refseq	NM_001098517
Protein Refseq	NP_001091987
MIM	605686
UniProt ID	Q9BY67

 Tel: 1-631-559-9269 1-516-512-3133


 Email: info@creative-biomart.com  Fax: 1-631-938-8127

 45-1 Ramsey Road, Shirley, NY 11967, USA

**Quality Control
Testing**



12.5% SDS-PAGE Stained with Coomassie Blue.

 Tel: 1-631-559-9269 1-516-512-3133

 Email: info@creative-biomart.com  Fax: 1-631-938-8127

 45-1 Ramsey Road, Shirley, NY 11967, USA