

Recombinant Full Length Human CADM1 Protein, C-Flag-tagged

Cat. No. CADM1-1524HFL **Lot. No.** (See product label)

SPECIFICATION

Product Overview

Recombinant Full Length Human CADM1 Protein, fused to Flag-tag at C-terminus, was expressed in Mammalian cells.

Species

Human

Source

Mammalian Cells

Description

Enables signaling receptor binding activity. Involved in several processes, including cell recognition; positive regulation of cytokine production; and susceptibility to natural killer cell mediated cytotoxicity. Located in plasma membrane. Implicated in breast carcinoma and prostate cancer. Biomarker of cervix uteri carcinoma in situ.

Form

25 mM Tris HCl, pH 7.3, 100 mM glycine, 10% glycerol.

Molecular Mass

48.3 kDa

AA Sequence

```
MASVVLPSGSQCAAAAAAAAAAPPGLRLRLLLLLFSAAALIPTGDGQNLFTKDVTVIEGE
VATISCQVNKSD DSVIQLLNPNRQTIYFRDFRPLKDSRFQLLNFSSELKVSLTNVSI
SDEGRYFCQLYTDPPQESYTTITV LVPPRNLMIDIQKDTAVEGEEIEVNCTAMASKP
ATTIRWFKGNTELK GKSEVEEWSDMYTVTSQLMLKVH KEDDGVPVICQVEHPAVT
GNLQTQRYLEVQYKPQVHIQMTYPLQGLTREGDALELTCEAIGKPQPVMVTW VRV
DDEMPQHAVLSGPNLFINNLNKTDNGTYRCEASNIVGKAHSDYMLYVYDPPTTIPPP
TTTTTTTTTT TTTILTITDSRAGEEGSIRAVDHAVIGGVVAVVVFAMLCLLILGRYFAR
HKGTYFTHEAKGADDAADA
```

 Tel: 1-631-559-9269 1-516-512-3133

 Email: info@creative-biomart.com  Fax: 1-631-938-8127

 45-1 Ramsey Road, Shirley, NY 11967, USA

DTAIINAEGGQNNSEEEKKEYFITRTRPLEQKLISEEDLAANDILDYKDDDDKV

Purity > 80% as determined by SDS-PAGE and Coomassie blue staining.

Stability Stable for 12 months from the date of receipt of the product under proper storage and handling conditions. Avoid repeated freeze-thaw cycles.

Storage Store at -80 centigrade.

Concentration >50 ug/mL as determined by microplate BCA method.

Preparation Recombinant protein was captured through anti-DDK affinity column followed by conventional chromatography steps.

Protein Families Transmembrane

Protein Pathways Cell adhesion molecules (CAMs)

Full Length Full L.

GENE INFORMATION

Gene Name [CADM1 cell adhesion molecule 1 \[Homo sapiens \(human\) \]](#)

Official Symbol [CADM1](#)

Synonyms BL2; ST17; IGSF4; NECL2; RA175; TSLC1; IGSF4A; Necl-2; SYNCAM; sgIGSF; sTSLC-1; synCAM1

Gene ID [23705](#)

 Tel: 1-631-559-9269 1-516-512-3133

 Email: info@creative-biomart.com  Fax: 1-631-938-8127

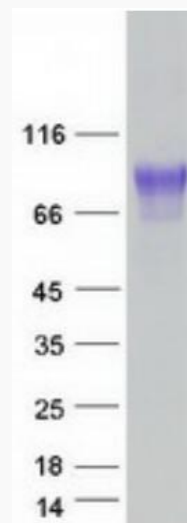
 45-1 Ramsey Road, Shirley, NY 11967, USA

mRNA Refseq [NM_014333.4](#)

Protein Refseq [NP_055148.3](#)

MIM [605686](#)

UniProt ID [Q9BY67](#)



Coomassie blue staining of purified CADM1 protein.

 Tel: 1-631-559-9269 1-516-512-3133

 Email: info@creative-biomart.com  Fax: 1-631-938-8127

 45-1 Ramsey Road, Shirley, NY 11967, USA