

## Active Recombinant Human CADM1 protein, His-tagged

Cat. No. CADM1-2183H Lot. No. (See product label)

### SPECIFICATION

<b>Product Overview</b>	Active Recombinant Human CADM1 protein(Q9BY67-1)(Gln45-His374) is expressed from HEK293 with His tag at the C-Terminus.
<b>Species</b>	Human
<b>Source</b>	HEK293
<b>ProteinLength</b>	45-374 aa
<b>Form</b>	Lyophilized from 0.22µm filtered solution in PBS (pH 7.4).
<b>Bio-activity</b>	Immobilized Human CADM1, His Tag at 0.5µg/ml (100µl/well) on the plate. Dose response curve for Anti-CADM1 Antibody, hFc Tag with the EC50 of 4.0 ng/ml determined by ELISA.
<b>Molecular Mass</b>	The protein has a predicted MW of 38 kDa. Due to glycosylation, the protein migrates to 60-70 kDa based on Bis-Tris PAGE result.
<b>Endotoxin</b>	Less than 1 EU per µg by the LAL method.
<b>Purity</b>	> 95% as determined by Bis-Tris PAGE > 95% as determined by HPLC
<b>Storage</b>	Store at -20 to -80°C for 12 months as supplied from date of receipt. -80°C for 3 months after reconstitution. Recommend to aliquot the protein into smaller quantities for optimal storage. Please minimize freeze-thaw cycles.

 Tel: 1-631-559-9269 1-516-512-3133

 Email: [info@creative-biomart.com](mailto:info@creative-biomart.com)  Fax: 1-631-938-8127

 45-1 Ramsey Road, Shirley, NY 11967, USA

<b>Reconstitution</b>	Dissolve the lyophilized protein in distilled water.
<b>protein Refseq-Weblink</b>	<a href="http://www.ncbi.nlm.nih.gov/protein/NP_001091987.1">http://www.ncbi.nlm.nih.gov/protein/NP_001091987.1</a>
<b>Unit ID</b>	Q9BY67
<b>Unit ID-Weblink</b>	<a href="https://www.uniprot.org/uniprotkb/Q9BY67">https://www.uniprot.org/uniprotkb/Q9BY67</a>

## GENE INFORMATION

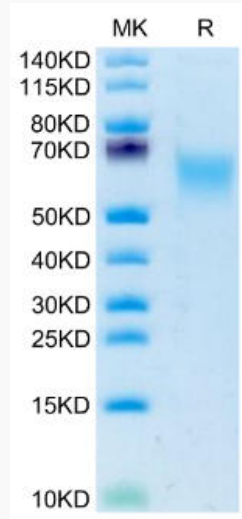
<b>Gene Name</b>	CADM1 cell adhesion molecule 1 [ Homo sapiens ]
<b>Official Symbol</b>	CADM1
<b>Synonyms</b>	CADM1; cell adhesion molecule 1; IGSF4, immunoglobulin superfamily, member 4, TSLC1, tumor suppressor in lung cancer 1; BL2; IGSF4A; Necl 2; NECL2; nectin like 2; RA175; ST17; SYNCAM; SYNCAM1; TSLC-1; nectin-like 2; nectin-like protein 2; truncated CADM1 protein; TSLC1/Nectin-like 2/IGSF4; synaptic cell adhesion molecule; tumor suppressor in lung cancer 1; immunoglobulin superfamily member 4; immunoglobulin superfamily, member 4; spermatogenic immunoglobulin superfamily; immunoglobulin superfamily, member 4D variant 2; IGSF4; TSLC1; Necl-2; sgIGSF; sTSLC-1; synCAM1; MGC51880; MGC149785; DKFZp686F1789;
<b>Gene ID</b>	23705
<b>mRNA Refseq</b>	NM_001098517
<b>protein Refseq</b>	NP_001091987
<b>MIM</b>	605686

 Tel: 1-631-559-9269 1-516-512-3133

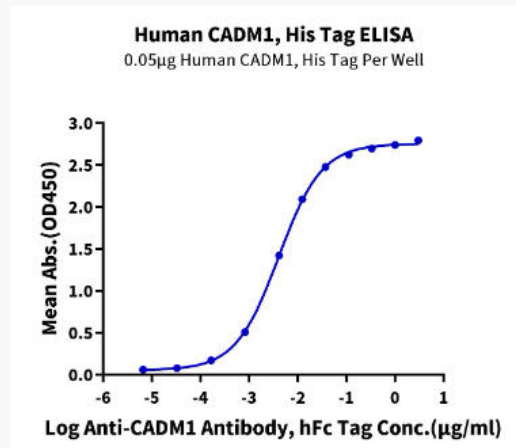
 Email: [info@creative-biomart.com](mailto:info@creative-biomart.com)  Fax: 1-631-938-8127

 45-1 Ramsey Road, Shirley, NY 11967, USA

**Bis-Tris PAGE**



**ELISA Data**



 Tel: 1-631-559-9269 1-516-512-3133

 Email: [info@creative-biomart.com](mailto:info@creative-biomart.com)  Fax: 1-631-938-8127

 45-1 Ramsey Road, Shirley, NY 11967, USA