

## Recombinant Human CADM1 protein, His-tagged

**Cat. No.** CADM1-35H    **Lot. No.** (See product label)

### SPECIFICATION

<b>Product Overview</b>	Recombinant Human CADM1 protein, fused to His-tag, was expressed in E. coli.
<b>Species</b>	Human
<b>Source</b>	E.coli
<b>Description</b>	Enables signaling receptor binding activity. Involved in several processes, including cell recognition; positive regulation of cytokine production; and susceptibility to natural killer cell mediated cytotoxicity. Located in plasma membrane. Implicated in breast carcinoma and prostate cancer. Biomarker of cervix uteri carcinoma in situ.
<b>Form</b>	PBS, pH 7.4.
<b>Molecular Mass</b>	35.35 kDa
<b>AA Sequence</b>	MGSSHHHHHSSGLVPRGSHMDGQNLFTKDVTVIEGEVATISCQVNKSDDSVIQLL NPNRQTIYFRDFRPLKDSRFQLLNFSSELKVSLTNVSISDEGRYFCQLYTDPPQES YTTITVLVPPRNLMIDIQKDTAVEGEEIEVNCTAMASKPATTIRWFKGNTELKKGKSEV EEWSDMYTVTSQLMLKVHKEDDGVVICQVEHPAVTGNLQTQRYLEVQYKQPQVHIQ MTYPLQGLTREGDALELTCEAIGKPQPMVTWVRVDDEMPQHAVLSGPNLFINNLN KTDNGTYRCEASNIVGKAHSDYMLYVYDPP
<b>Purity</b>	90%
<b>Storage</b>	Store it under sterile conditions at -20 to -80 centigrade. It is recommended that the

 Tel: 1-631-559-9269    1-516-512-3133

 Email: [info@creative-biomart.com](mailto:info@creative-biomart.com)     Fax: 1-631-938-8127

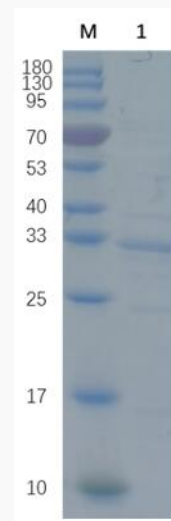
 45-1 Ramsey Road, Shirley, NY 11967, USA

protein be aliquoted for optimal storage. Avoid repeated freeze-thaw cycles.

## GENE INFORMATION

<b>Gene Name</b>	CADM1 cell adhesion molecule 1 [ Homo sapiens (human) ]
<b>Official Symbol</b>	CADM1
<b>Gene ID</b>	23705
<b>mRNA Refseq</b>	NM_014333
<b>Protein Refseq</b>	NP_055148
<b>MIM</b>	605686
<b>UniProt ID</b>	Q9BY67

## SDS-PAGE



Tel: 1-631-559-9269 1-516-512-3133

Email: [info@creative-biomart.com](mailto:info@creative-biomart.com) Fax: 1-631-938-8127

45-1 Ramsey Road, Shirley, NY 11967, USA



Reducing 12% SDS-PAGE analysis profile of purified CADM1 (CBB stained).

 Tel: 1-631-559-9269 1-516-512-3133

 Email: [info@creative-biomart.com](mailto:info@creative-biomart.com)  Fax: 1-631-938-8127

 45-1 Ramsey Road, Shirley, NY 11967, USA