

# Recombinant Human CADM1 Protein, MYC/DDK-tagged, C13 and N15-labeled

**Cat. No.** CADM1-428H    **Lot. No.** (See product label)

## SPECIFICATION

<b>Product Overview</b>	CADM1 MS Standard C13 and N15-labeled recombinant protein (NP_055148) with a C-terminal MYC/DDK tag, was expressed in HEK293 cells.
<b>Species</b>	Human
<b>Source</b>	HEK293
<b>Description</b>	<p>Mediates homophilic cell-cell adhesion in a Ca<sup>2+</sup>-independent manner. Also mediates heterophilic cell-cell adhesion with CADM3 and NECTIN3 in a Ca<sup>2+</sup>-independent manner. Interaction with CRTAM promotes natural killer (NK) cell cytotoxicity and interferon-gamma (IFN-gamma) secretion by CD8<sup>+</sup> cells in vitro as well as NK cell-mediated rejection of tumors expressing CADM1 in vivo. In mast cells, may mediate attachment to and promote communication with nerves. CADM1, together with MITF, is essential for development and survival of mast cells in vivo. By interacting with CRTAM and thus promoting the adhesion between CD8<sup>+</sup> T-cells and CD8<sup>+</sup> dendritic cells, regulates the retention of activated CD8<sup>+</sup> T-cell within the draining lymph node. Required for the intestinal retention of intraepithelial CD4<sup>+</sup> CD8<sup>+</sup> T-cells and, to a lesser extent, intraepithelial and lamina propria CD8<sup>+</sup> T-cells and CD4<sup>+</sup> T-cells. Interaction with CRTAM promotes the adhesion to gut-associated CD103<sup>+</sup> dendritic cells, which may facilitate the expression of gut-homing and adhesion molecules on T-cells and the conversion of CD4<sup>+</sup> T-cells into CD4<sup>+</sup> CD8<sup>+</sup> T-cells. Acts as a synaptic cell adhesion molecule and plays a role in the formation of dendritic spines and in synapse assembly. May be involved in neuronal migration, axon growth,</p>

 Tel: 1-631-559-9269    1-516-512-3133

 Email: [info@creative-biomart.com](mailto:info@creative-biomart.com)     Fax: 1-631-938-8127

 45-1 Ramsey Road, Shirley, NY 11967, USA

pathfinding, and fasciculation on the axons of differentiating neurons. May play diverse roles in the spermatogenesis including in the adhesion of spermatocytes and spermatids to Sertoli cells and for their normal differentiation into mature spermatozoa. Acts as a tumor suppressor in non-small-cell lung cancer (NSCLC) cells. May contribute to the less invasive phenotypes of lepidic growth tumor cells).

**Molecular Mass** 48.3 kDa

**AA Sequence**

MASVVLPSGSQCAAAAAAAAAAPPGLRLRLLLLLLFSAAALIPTGDGQNLFTKDVTVIEGE  
 VATISCQVNKSDDSVIQLLNPNRQTIYFRDFRPLKDSRFQLLNFSSELKVSLTNVSIS  
 DEGRYFCQLYTDPPQESYTTITVLVPPRNLMIDIQKDTAVEGEEIEVNCTAMASKPAT  
 TIRWFKGNTELKKGSEVEEWSDMYTVTSQMLKVKHEDDGVPVICQVEHPAVTGNL  
 QTQRYLEVQYKQPQVHIQMTYPLQGLTREGDALELTCEAIGKPQPMVTWVRVDDE  
 MPQHAVLSGPNLFINNLNKT DNGTYRCEASNIVGKAHSDYMLYVYDPPTTIPPTTT  
 TTTTTTTTTITITDSRAGEEGSIRAVDHA VIGGVAVVVVFAMLCLLIILGRYFARHKG  
 TYFTHEAKGADDAADADTAIINAEGGQNNSEEKKEYFITRTRPLEQKLISEEDLAANDI  
 LDYKDDDDKV

**Purity** > 80% as determined by SDS-PAGE and Coomassie blue staining

**Stability** Stable for 3 months from receipt of products under proper storage and handling conditions.

**Storage** Store at -80 centigrade. Avoid repeated freeze-thaw cycles.

**Concentration** 50 µg/mL as determined by BCA

**Storage Buffer** 100 mM glycine, 25 mM Tris-HCl, pH 7.3.

## GENE INFORMATION

 Tel: 1-631-559-9269 1-516-512-3133


 Email: [info@creative-biomart.com](mailto:info@creative-biomart.com)  Fax: 1-631-938-8127

 45-1 Ramsey Road, Shirley, NY 11967, USA

<b>Gene Name</b>	CADM1 cell adhesion molecule 1 [ Homo sapiens (human) ]
<b>Official Symbol</b>	CADM1
<b>Synonyms</b>	CADM1; cell adhesion molecule 1; IGSF4, immunoglobulin superfamily, member 4, TSLC1, tumor suppressor in lung cancer 1; BL2; IGSF4A; Necl 2; NECL2; nectin like 2; RA175; ST17; SYNCAM; SYNCAM1; TSLC-1; nectin-like 2; nectin-like protein 2; truncated CADM1 protein; TSLC1/Nectin-like 2/IGSF4; synaptic cell adhesion molecule; tumor suppressor in lung cancer 1; immunoglobulin superfamily member 4; immunoglobulin superfamily, member 4; spermatogenic immunoglobulin superfamily; immunoglobulin superfamily, member 4D variant 2; IGSF4; TSLC1; Necl-2; sgIGSF; sTSLC-1; synCAM1; MGC51880; MGC149785; DKFZp686F1789;
<b>Gene ID</b>	23705
<b>mRNA Refseq</b>	NM_014333
<b>Protein Refseq</b>	NP_055148
<b>MIM</b>	605686
<b>UniProt ID</b>	Q9BY67

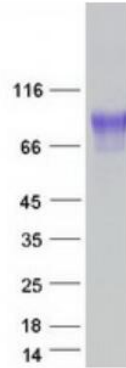
 Tel: 1-631-559-9269 1-516-512-3133

 Email: [info@creative-biomart.com](mailto:info@creative-biomart.com)  Fax: 1-631-938-8127

 45-1 Ramsey Road, Shirley, NY 11967, USA



**SDS-PAGE**



Tel: 1-631-559-9269 1-516-512-3133

Email: [info@creative-biomart.com](mailto:info@creative-biomart.com) Fax: 1-631-938-8127

45-1 Ramsey Road, Shirley, NY 11967, USA