

# Recombinant Human CADM3 Protein (Asn25-His330), C-His-tagged

Cat. No. CADM3-0473H Lot. No. (See product label)

## SPECIFICATION

<b>Product Overview</b>	Recombinant human CADM3 (Asn25-His330) was fused with the C-terminal His tag and was expressed in Mammalian cells.
<b>Species</b>	Human
<b>Source</b>	Mammalian Cells
<b>ProteinLength</b>	Asn25-His330
<b>Form</b>	Lyophilized powder/frozen liquid
<b>Molecular Mass</b>	33.66 kDa
<b>Purity</b>	>90% as determined by SDS-PAGE
<b>Notes</b>	For research use only.
<b>Storage</b>	Use a manual defrost freezer and avoid repeated freeze thaw cycles. Store at 2 to 8 centigrade for one week. Store at -20 to -80 centigrade for twelve months from the date of receipt.
<b>Storage Buffer</b>	Supplied as solution form in PBS or lyophilized from PBS.
<b>Reconstitution</b>	Reconstitute in sterile water for a stock solution.

 Tel: 1-631-559-9269 1-516-512-3133

 Email: [info@creative-biomart.com](mailto:info@creative-biomart.com)  Fax: 1-631-938-8127

 45-1 Ramsey Road, Shirley, NY 11967, USA

**Shipping** They are shipped out with dry ice/blue ice unless customers require otherwise.

## GENE INFORMATION

**Gene Name** [CADM3 cell adhesion molecule 3 \[ Homo sapiens \(human\) \]](#)

**Official Symbol** [CADM3](#)

**Synonyms** CADM3; cell adhesion molecule 3; IGSF4B, immunoglobulin superfamily, member 4B; BIgR; FLJ10698; Necl 1; NECL1; nectin like 1; SynCAM3; TSLL1; TSLC1-like 1; nectin-like 1; TSLC1-like protein 1; nectin-like protein 1; brain immunoglobulin receptor; synaptic cell adhesion molecule 3; immunoglobulin superfamily member 4B; immunoglobulin superfamily, member 4B; dendritic cell nectin-like protein 1 short isoform; IGSF4B; Necl-1; synCAM3;

**Gene ID** [57863](#)

**mRNA Refseq** [NM\\_001127173](#)

**Protein Refseq** [NP\\_001120645](#)

**MIM** [609743](#)

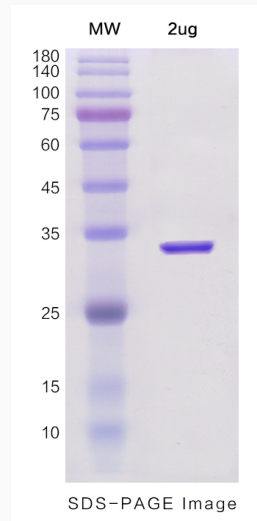
**UniProt ID** [Q8N126](#)

 Tel: 1-631-559-9269 1-516-512-3133

 Email: [info@creative-biomart.com](mailto:info@creative-biomart.com)  Fax: 1-631-938-8127

 45-1 Ramsey Road, Shirley, NY 11967, USA

**SDS-PAGE**



 Tel: 1-631-559-9269 1-516-512-3133

 Email: [info@creative-biomart.com](mailto:info@creative-biomart.com)  Fax: 1-631-938-8127

 45-1 Ramsey Road, Shirley, NY 11967, USA