

Recombinant Human CADM3 protein, His-tagged

Cat. No. CADM3-8564H Lot. No. (See product label)

SPECIFICATION

Product Overview	Recombinant Human CADM3 protein(Q8N126-1)(Asn25-Tyr329), fused with C-terminal His tag, was expressed in HEK293.
Species	Human
Source	HEK293
ProteinLength	Asn25-Tyr329
Tag	C-His
Form	Supplied as 0.22µm filtered solution in PBS (pH 7.4).
Molecular Mass	The protein has a predicted MW of 34.6 kDa. Due to glycosylation, the protein migrates to 38-45 kDa based on Tris-Bis PAGE result.
Endotoxin	Less than 1EU per µg by the LAL method.
Purity	> 95% as determined by Tris-Bis PAGE;> 95% as determined by HPLC
Storage	Valid for 12 months from date of receipt when stored at -80°C. Recommend to aliquot the protein into smaller quantities for optimal storage. Please do not repeated freeze-thaw cycles.
Reconstitution	It is recommended that sterile water be added to the vial to prepare a stock solution of

 Tel: 1-631-559-9269 1-516-512-3133

 Email: info@creative-biomart.com  Fax: 1-631-938-8127

 45-1 Ramsey Road, Shirley, NY 11967, USA

0.2 ug/ul. Centrifuge the vial at 4°C before opening to recover the entire contents.

GENE INFORMATION

Gene Name [CADM3 cell adhesion molecule 3 \[Homo sapiens \]](#)

Official Symbol [CADM3](#)

Synonyms CADM3; cell adhesion molecule 3; IGSF4B, immunoglobulin superfamily, member 4B; BIgR; FLJ10698; Necl 1; NECL1; nectin like 1; SynCAM3; TSLL1; TSLC1-like 1; nectin-like 1; TSLC1-like protein 1; nectin-like protein 1; brain immunoglobulin receptor; synaptic cell adhesion molecule 3; immunoglobulin superfamily member 4B; immunoglobulin superfamily, member 4B; dendritic cell nectin-like protein 1 short isoform; IGSF4B; Necl-1; synCAM3;

Gene ID [57863](#)

mRNA Refseq [NM_001127173](#)

Protein Refseq [NP_001120645](#)

MIM [609743](#)

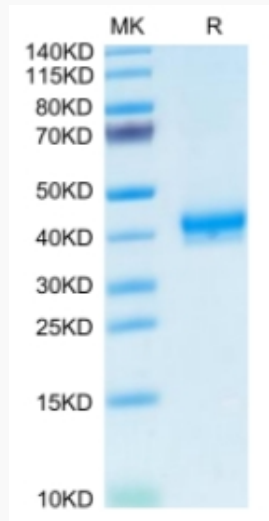
UniProt ID [Q8N126](#)

 Tel: 1-631-559-9269 1-516-512-3133

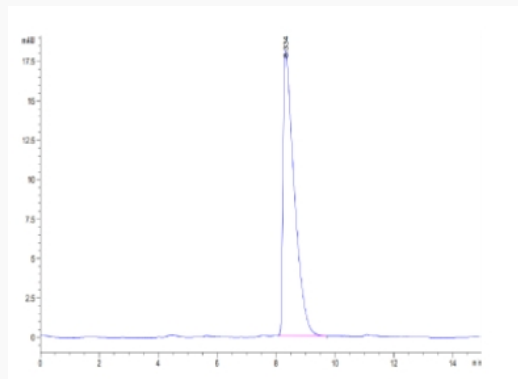
 Email: info@creative-biomart.com  Fax: 1-631-938-8127

 45-1 Ramsey Road, Shirley, NY 11967, USA

Tris-Bis PAGE



SEC-HPLC



 Tel: 1-631-559-9269 1-516-512-3133

 Email: info@creative-biomart.com  Fax: 1-631-938-8127

 45-1 Ramsey Road, Shirley, NY 11967, USA