

Recombinant Human CADM4 Protein, Myc/DDK-tagged, C13 and N15-labeled

Cat. No. CADM4-6655H **Lot. No.** (See product label)

SPECIFICATION

Product Overview	CADM4 MS Standard C13 and N15-labeled recombinant protein (NP_660339) with a C-terminal MYC/DDK tag, was expressed in HEK293 cells.
Species	Human
Source	HEK293
Description	CADM4 (Cell Adhesion Molecule 4) is a Protein Coding gene. Diseases associated with CADM4 include Small Intestine Adenocarcinoma and Neuropathy, Congenital Hypomyelinating, 1, Autosomal Recessive. An important paralog of this gene is CADM1.
Molecular Mass	42.6 kDa
AA Sequence	MGRARRFQWPLLLLWAAAAGPGAGQEVTENVTVAEAGGVAEITCRLHQYDGSIVVI QNPQRQTLFFNGTRALKDERFQLEEFSPRRVRIRLSDARLEDEGGYFCQLYTEDTH HQIATLTVLVAPENPVVEVREQAVEGGEVELSCLVPRSRPAATLRWYRDRKELKGV SSSQENGVKWSVASTVRFVRVDRKDDGGIICEAQNQALPSGHSKQTQYVLDVQYSP TARIHASQAVVREGDTLVLTCAVTGNPRPNQIRWNRGNESLPERAEAVGETLTLPLGL VSADNGTYTCEASNKHGHARALYVLVYDPGAVVEAQTSPYAIVGGILALLVFLIIC VLVGMVWCSVRQKGSYLTHEASGLDEQGEAREAFNGSDGHKRKEEFFITRTRPLE QKLISEEDLAANDILDYKDDDDKV
Purity	> 80% as determined by SDS-PAGE and Coomassie blue staining

 Tel: 1-631-559-9269 1-516-512-3133

 Email: info@creative-biomart.com  Fax: 1-631-938-8127

 45-1 Ramsey Road, Shirley, NY 11967, USA

Stability	Stable for 3 months from receipt of products under proper storage and handling conditions.
Storage	Store at -80 centigrade. Avoid repeated freeze-thaw cycles.
Concentration	50 µg/mL as determined by BCA
Storage Buffer	100 mM glycine, 25 mM Tris-HCl, pH 7.3.

GENE INFORMATION

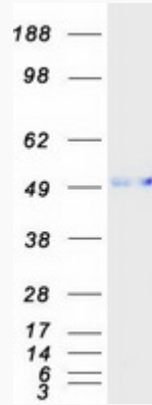
Gene Name	CADM4 cell adhesion molecule 4 [Homo sapiens (human)]
Official Symbol	CADM4
Synonyms	CADM4; cell adhesion molecule 4; IGSF4C, immunoglobulin superfamily, member 4C; Necl 4; nectin like 4; SynCAM4; TSLL2; TSLC1-like 2; nectin-like 4; TSLC1-like protein 2; nectin-like protein 4; immunoglobulin superfamily member 4C; immunoglobulin superfamily, member 4C; NECL4; IGSF4C; Necl-4; synCAM4;
Gene ID	199731
mRNA Refseq	NM_145296
Protein Refseq	NP_660339
MIM	609744
UniProt ID	Q8NFZ8

 Tel: 1-631-559-9269 1-516-512-3133

 Email: info@creative-biomart.com  Fax: 1-631-938-8127

 45-1 Ramsey Road, Shirley, NY 11967, USA

SDS-PAGE



 Tel: 1-631-559-9269 1-516-512-3133

 Email: info@creative-biomart.com  Fax: 1-631-938-8127

 45-1 Ramsey Road, Shirley, NY 11967, USA