

## Recombinant Human CADPS Protein, GST-Tagged

Cat. No. CADPS-0283H Lot. No. (See product label)

### SPECIFICATION

<b>Product Overview</b>	Human CADPS full-length ORF (AAH15754.1, 1 a.a. - 222 a.a.) recombinant protein with GST-tag at N-terminal.
<b>Species</b>	Human
<b>Source</b>	Wheat Germ
<b>Description</b>	This gene encodes a novel neural/endocrine-specific cytosolic and peripheral membrane protein required for the Ca <sup>2+</sup> -regulated exocytosis of secretory vesicles. The protein acts at a stage in exocytosis that follows ATP-dependent priming, which involves the essential synthesis of phosphatidylinositol 4,5-bisphosphate (PtdIns(4,5)P <sub>2</sub> ). Alternative splicing has been observed at this locus and three variants, encoding distinct isoforms, are described. [provided by RefSeq, Aug 2008]
<b>Molecular Mass</b>	52.1 kDa
<b>AA Sequence</b>	MFNVMVDAKAQSTKLCSMEMGQEFAMWHQYHSHKIDELIEETVKEMITLLVAKFVTI LEGVLAKLSRYDEGTLFSSFLSFTVKAASKYVDVPKPGMDVADAYVTFVRHSQDVL RDKVNEEMYIERLFDQWYNSSMNVICTWLTDRMDLQLHIYQLKTLIRMVKKTYRDFR LQGVLDSTLNSKTYETIRNRLTVEEATASVSEGGGLQGISMKDSDEEDEEDD
<b>Applications</b>	Enzyme-linked Immunoabsorbent Assay Western Blot (Recombinant protein) Antibody Production Protein Array

 Tel: 1-631-559-9269 1-516-512-3133

 Email: [info@creative-biomart.com](mailto:info@creative-biomart.com)  Fax: 1-631-938-8127

 45-1 Ramsey Road, Shirley, NY 11967, USA

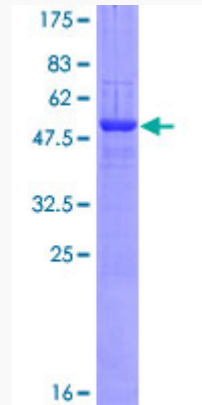
<b>Notes</b>	Best use within three months from the date of receipt of this protein.
<b>Storage</b>	Store at -80 centigrade. Aliquot to avoid repeated freezing and thawing.
<b>Storage Buffer</b>	50 mM Tris-HCl, 10 mM reduced Glutathione, pH=8.0 in the elution buffer.
<b>GENE INFORMATION</b>	
<b>Gene Name</b>	CADPS Ca <sup>++</sup> -dependent secretion activator [ Homo sapiens ]
<b>Official Symbol</b>	CADPS
<b>Synonyms</b>	CAPS; CAPS1; CADPS1
<b>Gene ID</b>	8618
<b>mRNA Refseq</b>	NM_183394
<b>Protein Refseq</b>	NP_899631
<b>MIM</b>	604667
<b>UniProt ID</b>	Q9ULU8

 Tel: 1-631-559-9269 1-516-512-3133

 Email: [info@creative-biomart.com](mailto:info@creative-biomart.com)  Fax: 1-631-938-8127

 45-1 Ramsey Road, Shirley, NY 11967, USA

**Quality Control  
Testing**



12.5% SDS-PAGE Stained with Coomassie Blue.

 Tel: 1-631-559-9269 1-516-512-3133

 Email: [info@creative-biomart.com](mailto:info@creative-biomart.com)  Fax: 1-631-938-8127

 45-1 Ramsey Road, Shirley, NY 11967, USA