

Recombinant Human CADPS Protein, His/GST-tagged

Cat. No. CADPS-580H **Lot. No.** (See product label)

SPECIFICATION

Product Overview	Recombinant Human CADPS(Val1186~Asp1352) fused with His/GST tag at N-terminal was expressed in E. coli.
Species	Human
Source	E.coli
ProteinLength	Val1186~Asp1352
Description	This gene encodes a novel neural/endocrine-specific cytosolic and peripheral membrane protein required for the Ca ²⁺ -regulated exocytosis of secretory vesicles. The protein acts at a stage in exocytosis that follows ATP-dependent priming, which involves the essential synthesis of phosphatidylinositol 4,5-bisphosphate (PtdIns(4,5)P ₂). Alternative splicing has been observed at this locus and three variants, encoding distinct isoforms, are described.
Form	PBS, pH7.4, containing 0.01% SKL, 1mM DTT, 5% Trehalose and Proclin300.
Molecular Mass	49.2kDa
Endotoxin	<1.0EU per 1ug (determined by the LAL method)
Purity	> 90%
Applications	Positive Control; Immunogen; SDS-PAGE; WB.

 Tel: 1-631-559-9269 1-516-512-3133

 Email: info@creative-biomart.com  Fax: 1-631-938-8127

 45-1 Ramsey Road, Shirley, NY 11967, USA

If bio-activity of the protein is needed, please check active protein

Stability

The thermal stability is described by the loss rate. The loss rate was determined by accelerated thermal degradation test, that is, incubate the protein at 37 centigrade for 48h, and no obvious degradation and precipitation were observed. The loss rate is less than 5% within the expiration date under appropriate storage condition.

Storage

Avoid repeated freeze/thaw cycles. Store at 2-8 centigrade for one month. Aliquot and store at -80 centigrade for 12 months.

Reconstitution

Reconstitute in PBS or others

GENE INFORMATION

Gene Name

[CADPS Ca⁺⁺-dependent secretion activator \[Homo sapiens \]](#)

Official Symbol

[CADPS](#)

Synonyms

CAPS; CAPS1; CADPS1

Gene ID

[8618](#)

mRNA Refseq

[NM_183394.2](#)

Protein Refseq

[NP_899631.1](#)

MIM

[604667](#)

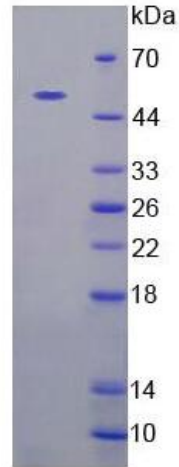
UniProt ID

[Q9ULU8](#)

 Tel: 1-631-559-9269 1-516-512-3133

 Email: info@creative-biomart.com  Fax: 1-631-938-8127

 45-1 Ramsey Road, Shirley, NY 11967, USA



15% SDS-PAGE

 Tel: 1-631-559-9269 1-516-512-3133

 Email: info@creative-biomart.com  Fax: 1-631-938-8127

 45-1 Ramsey Road, Shirley, NY 11967, USA