

Recombinant Human CAGE1 Protein, GST-Tagged

Cat. No. CAGE1-0285H **Lot. No.** (See product label)

SPECIFICATION

Product Overview	Human CAGE1 partial ORF (NP_786887.1, 2 a.a. - 100 a.a.) recombinant protein with GST-tag at N-terminal.
Species	Human
Source	Wheat Germ
Description	CAGE1 (Cancer Antigen 1) is a Protein Coding gene. Diseases associated with CAGE1 include Chronic Frontal Sinusitis and Rectal Neoplasm.
Molecular Mass	36.63 kDa
AA Sequence	NKDYQKFWSSPSDPVHFEVDTSHEKVESMSESDTMNVSNLSQGVMLSHSPICMET TGTTCDLPQNEIKNFERENEYESTLCEDAYGTLDNLLNDNNIEN
Applications	Enzyme-linked Immunoabsorbent Assay Western Blot (Recombinant protein) Antibody Production Protein Array
Notes	Best use within three months from the date of receipt of this protein.
Storage	Store at -80 centigrade. Aliquot to avoid repeated freezing and thawing.
Storage Buffer	50 mM Tris-HCl, 10 mM reduced Glutathione, pH=8.0 in the elution buffer.

 Tel: 1-631-559-9269 1-516-512-3133

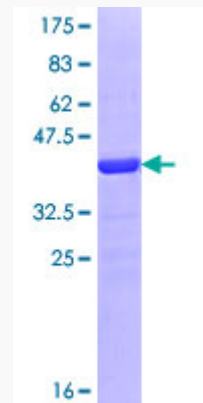
 Email: info@creative-biomart.com  Fax: 1-631-938-8127

 45-1 Ramsey Road, Shirley, NY 11967, USA

GENE INFORMATION

Gene Name	CAGE1 cancer antigen 1 [Homo sapiens]
Official Symbol	CAGE1
Synonyms	CAGE1; cancer antigen 1; cancer/testis antigen 3, CTAG3; cancer-associated gene 1 protein; bA69L16.7; cancer/testis antigen 95; CT95; cancer/testis antigen 3; cancer/testis antigen gene 1; CT3; CTAG3; FLJ40441;
Gene ID	285782
mRNA Refseq	NM_001170692
Protein Refseq	NP_001164163
MIM	608304
UniProt ID	Q8TC20

Quality Control Testing



12.5% SDS-PAGE Stained with Coomassie Blue.

 Tel: 1-631-559-9269 1-516-512-3133

 Email: info@creative-biomart.com  Fax: 1-631-938-8127

 45-1 Ramsey Road, Shirley, NY 11967, USA