

Recombinant Human CALB1 protein, His-tagged

Cat. No. CALB1-3342H Lot. No. (See product label)

SPECIFICATION

Product Overview	Recombinant Human CALB1 protein(P05937)(2-261aa), fused with C-terminal His tag, was expressed in Yeast.
Species	Human
Source	Yeast
ProteinLength	2-261aa
Tag	C-His
Form	If the delivery form is liquid, the default storage buffer is Tris/PBS-based buffer, 5%-50% glycerol. If the delivery form is lyophilized powder, the buffer before lyophilization is Tris/PBS-based buffer, 6% Trehalose, pH 8.0.
Molecular Mass	30.8 kDa
Purity	Greater than 85% as determined by SDS-PAGE.
Storage	Store at -20°C/-80°C upon receipt, aliquoting is necessary for mutiple use. Avoid repeated freeze-thaw cycles.
Reconstitution	We recommend that this vial be briefly centrifuged prior to opening to bring the contents to the bottom. Please reconstitute protein in deionized sterile water to a concentration of 0.1-1.0 mg/mL. We recommend to add 5-50% of glycerol (final

 Tel: 1-631-559-9269 1-516-512-3133

 Email: info@creative-biomart.com  Fax: 1-631-938-8127

 45-1 Ramsey Road, Shirley, NY 11967, USA

concentration) and aliquot for long-term storage at -20°C/-80°C.

AA Sequence

AESHLQSSLITASQFFEIWLHFDADGSGYLEGKELQNLIQELQQARKKAGLELSP
 KTFVDQYQQRDDGKIGIVELAHVLPTEENFLLLFRCQQLKSCEEFMKTWRKYDTH
 SGFIETEELKNFLKDLLEKANKTVDDTKLAEYTDMLKLFDSNNDGKLELTEMARLLP
 VQENFLLKFQGIKMCCKEFNKAFELYDQDNGYIDENELDALLKDLCEKNKQDLIN
 NITTYKKNIMALSDGGKLYRTDLALILCAGDN

GENE INFORMATION

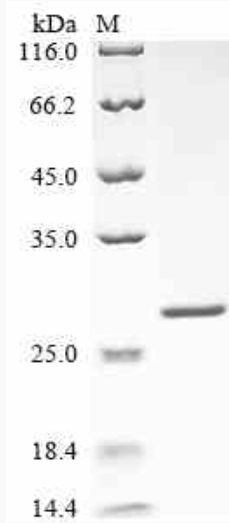
Gene Name	CALB1 calbindin 1, 28kDa [Homo sapiens]
Official Symbol	CALB1
Synonyms	CALB1; calbindin 1, 28kDa; CALB; calbindin; D-28K; calbindin D28; RTVL-H protein; calbindin 1, (28kD); vitamin D-dependent calcium-binding protein, avian-type;
Gene ID	793
mRNA Refseq	NM_004929
Protein Refseq	NP_004920
MIM	114050
UniProt ID	P05937

 Tel: 1-631-559-9269 1-516-512-3133

 Email: info@creative-biomart.com  Fax: 1-631-938-8127

 45-1 Ramsey Road, Shirley, NY 11967, USA

SDS-PAGE



 Tel: 1-631-559-9269 1-516-512-3133

 Email: info@creative-biomart.com  Fax: 1-631-938-8127

 45-1 Ramsey Road, Shirley, NY 11967, USA