

Recombinant Human CALB2 Protein, GST-Tagged

Cat. No. CALB2-0287H Lot. No. (See product label)

SPECIFICATION

Product Overview	Human CALB2 full-length ORF (NP_009018.1, 1 a.a. - 179 a.a.) recombinant protein with GST-tag at N-terminal.
Species	Human
Source	Wheat Germ
Description	This gene encodes an intracellular calcium-binding protein belonging to the troponin C superfamily. Members of this protein family have six EF-hand domains which bind calcium. This protein plays a role in diverse cellular functions, including message targeting and intracellular calcium buffering. It also functions as a modulator of neuronal excitability, and is a diagnostic marker for some human diseases, including Hirschsprung disease and some cancers. Alternative splicing results in multiple transcript variants. [provided by RefSeq, Jun 2010]
Molecular Mass	47.1 kDa
AA Sequence	MAGPQQQPPYLHLAELTASQFLEIWKHFDADGNGYIEGKELENFFQELEKARKGSG MMSKSDNFGEKMKEFMQKYDKNSDGKIEMAELAQILPTEENFLLCFRQHVGS SAEF MEAWRKYDTRSGYIEANELKGFLSDLLKKANRPYDEPKLQEYQTILRMFDLNGD GKLGLSEMSRA
Applications	Enzyme-linked Immunoabsorbent Assay Western Blot (Recombinant protein) Antibody Production

 Tel: 1-631-559-9269 1-516-512-3133

 Email: info@creative-biomart.com  Fax: 1-631-938-8127

 45-1 Ramsey Road, Shirley, NY 11967, USA

Protein Array

Notes	Best use within three months from the date of receipt of this protein.
Storage	Store at -80 centigrade. Aliquot to avoid repeated freezing and thawing.
Storage Buffer	50 mM Tris-HCl, 10 mM reduced Glutathione, pH=8.0 in the elution buffer.

GENE INFORMATION

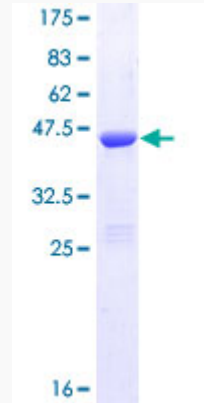
Gene Name	CALB2 calbindin 2 [Homo sapiens]
Official Symbol	CALB2
Synonyms	CALB2; calbindin 2; calbindin 2, 29kDa (calretinin); calretinin; CAL2; calbindin D29K; 29 kDa calbindin; calbindin 2, (29kD, calretinin); CR; CAB29;
Gene ID	794
mRNA Refseq	NM_001740
Protein Refseq	NP_001731
MIM	114051
UniProt ID	P22676

 Tel: 1-631-559-9269 1-516-512-3133

 Email: info@creative-biomart.com  Fax: 1-631-938-8127

 45-1 Ramsey Road, Shirley, NY 11967, USA

**Quality Control
Testing**



12.5% SDS-PAGE Stained with Coomassie Blue.

 Tel: 1-631-559-9269 1-516-512-3133

 Email: info@creative-biomart.com  Fax: 1-631-938-8127

 45-1 Ramsey Road, Shirley, NY 11967, USA