

Recombinant Human CALB2 protein, His-tagged

Cat. No. CALB2-0823H Lot. No. (See product label)

SPECIFICATION

Product Overview Recombinant Human CALB2 protein(Phe28~Met248), fused with N-terminal His tag, was expressed in E. coli.

Species Human

Source E.coli

ProteinLength Phe28~Met248

Tag N-His

Form PBS, pH7.4, containing 0.01% SKL, 5% Trehalose.

Molecular Mass 29.5kDa

Endotoxin <1.0EU per 1µg (determined by the LAL method)

Purity > 90%

Storage Avoid repeated freeze/thaw cycles. Store at 2-8°C for one month. Aliquot and store at -80°C for 12 months.

Reconstitution Reconstitute in 10mM PBS (pH7.4) to a concentration of 0.1-1.0 mg/mL. Do not vortex.

 Tel: 1-631-559-9269 1-516-512-3133

 Email: info@creative-biomart.com  Fax: 1-631-938-8127

 45-1 Ramsey Road, Shirley, NY 11967, USA

GENE INFORMATION

Gene Name CALB2 calbindin 2 [Homo sapiens]

Official Symbol CALB2

Synonyms CALB2; calbindin 2; calbindin 2, 29kDa (calretinin); calretinin; CAL2; calbindin D29K; 29 kDa calbindin; calbindin 2, (29kD, calretinin); CR; CAB29;

Gene ID 794

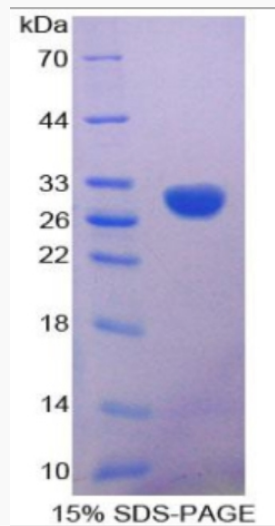
mRNA Refseq NM_001740

Protein Refseq NP_001731

MIM 114051

UniProt ID P22676

SDS-PAGE



Tel: 1-631-559-9269 1-516-512-3133

Email: info@creative-biomart.com Fax: 1-631-938-8127

45-1 Ramsey Road, Shirley, NY 11967, USA