

# Recombinant Human CALB2 Protein, Myc/DDK-tagged, C13 and N15-labeled

Cat. No. CALB2-3362H Lot. No. (See product label)

## SPECIFICATION

### Product Overview

CALB2 MS Standard C13 and N15-labeled recombinant protein (NP\_001731) with a C-terminal MYC/DDK tag, was expressed in HEK293 cells.

### Species

Human

### Source

HEK293

### Description

This gene encodes an intracellular calcium-binding protein belonging to the troponin C superfamily. Members of this protein family have six EF-hand domains which bind calcium. This protein plays a role in diverse cellular functions, including message targeting and intracellular calcium buffering. It also functions as a modulator of neuronal excitability, and is a diagnostic marker for some human diseases, including Hirschsprung disease and some cancers. Alternative splicing results in multiple transcript variants.

### Molecular Mass

31.6 kDa

### AA Sequence

MAGPQQQPPYLHLAELTASQFLEIWKHFDADGNGYIEGKELENFFQELEKARKGSG  
 MMSKSDNFGEKMKEFMQKYDKNSDGKIEMAELAQILPTEENFLLCFRQHVGSSTEF  
 MEAWRKYDTRSGYIEANELKGFLLSDLLKKANRPYDEPKLQEYQTILRMFDLNGD  
 GKLGLSEMSRLLPVQENFLLKFQGMKLTSEEFNAIFTFYDKDRSGYIDEHELDALLKD  
 LYEKNKEMNIQQLTNYRKSVMSLAEAGKLYRKDLEIVLCSEPPMTRTRPLEQKLISE  
 EDLAANDILDYKDDDDKV

 Tel: 1-631-559-9269 1-516-512-3133

 Email: [info@creative-biomart.com](mailto:info@creative-biomart.com)  Fax: 1-631-938-8127

 45-1 Ramsey Road, Shirley, NY 11967, USA

<b>Purity</b>	> 80% as determined by SDS-PAGE and Coomassie blue staining
<b>Stability</b>	Stable for 3 months from receipt of products under proper storage and handling conditions.
<b>Storage</b>	Store at -80 centigrade. Avoid repeated freeze-thaw cycles.
<b>Concentration</b>	50 µg/mL as determined by BCA
<b>Storage Buffer</b>	100 mM glycine, 25 mM Tris-HCl, pH 7.3.

## GENE INFORMATION

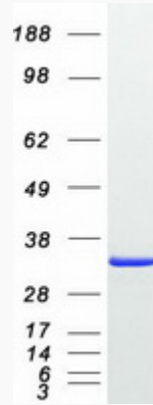
<b>Gene Name</b>	CALB2 calbindin 2 [ Homo sapiens (human) ]
<b>Official Symbol</b>	CALB2
<b>Synonyms</b>	CALB2; calbindin 2; calbindin 2, 29kDa (calretinin); calretinin; CAL2; calbindin D29K; 29 kDa calbindin; calbindin 2, (29kD, calretinin); CR; CAB29;
<b>Gene ID</b>	794
<b>mRNA Refseq</b>	NM_001740
<b>Protein Refseq</b>	NP_001731
<b>MIM</b>	114051
<b>UniProt ID</b>	P22676

 Tel: 1-631-559-9269 1-516-512-3133

 Email: [info@creative-biomart.com](mailto:info@creative-biomart.com)  Fax: 1-631-938-8127

 45-1 Ramsey Road, Shirley, NY 11967, USA

**SDS-PAGE**



 Tel: 1-631-559-9269 1-516-512-3133

 Email: [info@creative-biomart.com](mailto:info@creative-biomart.com)  Fax: 1-631-938-8127

 45-1 Ramsey Road, Shirley, NY 11967, USA