

Recombinant Human CALCA Protein (Met1-Asn141), C-His tagged

Cat. No. CALCA-5181H Lot. No. (See product label)

SPECIFICATION

| | |
|-------------------------|---|
| Product Overview | Recombinant human CALCA (Met1~Asn141) fused with the C-terminal His tag was expressed in Mammalian cells. |
| Species | Human |
| Source | Mammalian Cells |
| ProteinLength | Met1-Asn141 |
| Form | Lyophilized powder/frozen liquid |
| Molecular Mass | 16.4 kDa |
| Purity | >90% as determined by SDS-PAGE. |
| Notes | For research use only. |
| Storage | Use a manual defrost freezer and avoid repeated freeze thaw cycles. Store at 2 to 8 centigrade for one week. Store at -20 to -80 centigrade for twelve months from the date of receipt. |
| Storage Buffer | Supplied as solution form in PBS, pH 7.5 or lyophilized from PBS, pH 7.5. |
| Reconstitution | Reconstitute in sterile water for a stock solution. |

 Tel: 1-631-559-9269 1-516-512-3133

 Email: info@creative-biomart.com  Fax: 1-631-938-8127

 45-1 Ramsey Road, Shirley, NY 11967, USA

Shipping They are shipped out with dry ice/blue ice unless customers require otherwise.

GENE INFORMATION

Gene Name CALCA calcitonin-related polypeptide alpha [Homo sapiens (human)]

Official Symbol CALCA

Synonyms CALCA; calcitonin-related polypeptide alpha; CALC1, calcitonin 1; calcitonin; calcitonin gene-related peptide 1; calcitonin; katalcalcin; calcitonin 1; alpha-type CGRP; calcitonin gene-related peptide I; calcitonin/calcitonin-related polypeptide, alpha; CT; KC; CGRP; CALC1; CGRP1; CGRP-I; MGC126648;

Gene ID 796

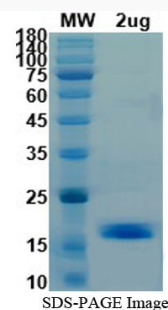
mRNA Refseq NM_001033952

Protein Refseq NP_001029124

MIM 114130

UniProt ID P01258

SDS-PAGE



Tel: 1-631-559-9269 1-516-512-3133

Email: info@creative-biomart.com Fax: 1-631-938-8127

45-1 Ramsey Road, Shirley, NY 11967, USA