

Recombinant Human CALCA Protein, His&GST-tagged

Cat. No. CALCA-613H Lot. No. (See product label)

SPECIFICATION

Product Overview	Recombinant Human CALCA Protein (Cys85-Pro116) with His&GST tag was expressed in E. coli.
Species	Human
Source	E.coli
ProteinLength	Cys85-Pro116
Description	This gene encodes the peptide hormones calcitonin, calcitonin gene-related peptide and katacalcin by tissue-specific alternative RNA splicing of the gene transcripts and cleavage of inactive precursor proteins. Calcitonin is involved in calcium regulation and acts to regulate phosphorus metabolism. Calcitonin gene-related peptide functions as a vasodilator and as an antimicrobial peptide while katacalcin is a calcium-lowering peptide. Multiple transcript variants encoding different isoforms have been found for this gene.
Form	Freeze-dried powder
Molecular Mass	Predicted Molecular Mass: 33.4 kDa; Accurate Molecular Mass: 34 kDa
Purity	> 90%
Applications	Positive Control; Immunogen; SDS-PAGE; WB.

 Tel: 1-631-559-9269 1-516-512-3133

 Email: info@creative-biomart.com  Fax: 1-631-938-8127

 45-1 Ramsey Road, Shirley, NY 11967, USA

Stability	The thermal stability is described by the loss rate. The loss rate was determined by accelerated thermal degradation test, that is, incubate the protein at 37 centigrade for 48h, and no obvious degradation and precipitation were observed. The loss rate is less than 5% within the expiration date under appropriate storage condition.
Storage	Avoid repeated freeze/thaw cycles. Store at 2-8 centigrade for one month. Aliquot and store at -80 centigrade for 12 months.
Storage Buffer	20mM Tris, 150mM NaCl, pH8.0, containing 1mM EDTA, 1mM DTT, 0.01% SKL, 5% Trehalose and Proclin300.
Reconstitution	Reconstitute in 20mM Tris, 150mM NaCl (pH8.0) to a concentration of 0.1-1.0 mg/mL. Do not vortex.

GENE INFORMATION

Gene Name	CALCA calcitonin-related polypeptide alpha [Homo sapiens (human)]
Official Symbol	CALCA
Synonyms	CALCA; calcitonin-related polypeptide alpha; CALC1, calcitonin 1; calcitonin; calcitonin gene-related peptide 1; calcitonin; katacalcin; calcitonin 1; alpha-type CGRP; calcitonin gene-related peptide I; calcitonin/calcitonin-related polypeptide, alpha; CT; KC; CGRP; CALC1; CGRP1; CGRP-I; MGC126648;
Gene ID	796
mRNA Refseq	NM_001033952
Protein Refseq	NP_001029124

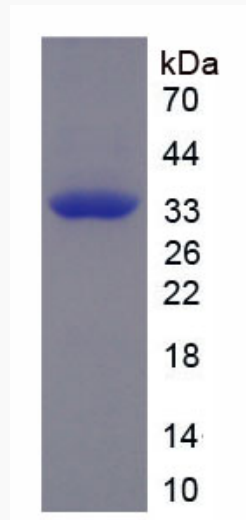
 Tel: 1-631-559-9269 1-516-512-3133

 Email: info@creative-biomart.com  Fax: 1-631-938-8127

 45-1 Ramsey Road, Shirley, NY 11967, USA

MIM 114130

UniProt ID P01258



Tel: 1-631-559-9269 1-516-512-3133

Email: info@creative-biomart.com Fax: 1-631-938-8127

45-1 Ramsey Road, Shirley, NY 11967, USA