

Recombinant Human CALCA protein, His-tagged

Cat. No. CALCA-6733H Lot. No. (See product label)

SPECIFICATION

Product Overview	Recombinant Human CALCA protein(1-141 aa), fused with N-terminal His tag, was expressed in E. coli.
ProteinLength	1-141 aa
Tag	N-His
Form	The purified protein was Lyophilized from sterile PBS (58mM Na ₂ HPO ₄ , 17mM NaH ₂ PO ₄ , 68mM NaCl, pH7.4). 5 % trehalose and 5 % mannitol are added as protectant before lyophilization.
Purity	85%, by SDS-PAGE with Coomassie Brilliant Blue staining.
Storage	Short-term storage: Store at 2-8°C for (1-2 weeks). Long-term storage: Aliquot and store at -20°C to -80°C for up to 3 months, reconstitution with sterile water and addition of an equal volume of glycerol. Avoid repeat freeze-thaw cycles.
Reconstitution	Reconstitute at 0.25 µg/µl in 200 µl sterile water for short-term storage. After reconstitution with sterile water, if glycerol has no effect on subsequent experiments, it is recommended to add an equal volume of glycerol for long-term storage.
AA Sequence	MGFQKFSPFLALSILVLLQAGSLHAAPFRSALESSPADPATLSEDEARLLLAALVQDY VQMKASELEQEQEREGSSLDSPRSKRCGNLSTCMLGTYTQDFNKFHTFPQTAIGV GAPGKKRDMSSDLERDHRPHVSMPQAN

 Tel: 1-631-559-9269 1-516-512-3133

 Email: info@creative-biomart.com  Fax: 1-631-938-8127

 45-1 Ramsey Road, Shirley, NY 11967, USA

GENE INFORMATION

Gene Name CALCA calcitonin-related polypeptide alpha [Homo sapiens]

Official Symbol CALCA

Synonyms CALCA; calcitonin-related polypeptide alpha; CALC1, calcitonin 1; calcitonin; calcitonin gene-related peptide 1; calcitonin; katalcalcin; calcitonin 1; alpha-type CGRP; calcitonin gene-related peptide I; calcitonin/calcitonin-related polypeptide, alpha; CT; KC; CGRP; CALC1; CGRP1; CGRP-I; MGC126648;

Gene ID 796

mRNA Refseq NM_001033952

Protein Refseq NP_001029124

MIM 114130

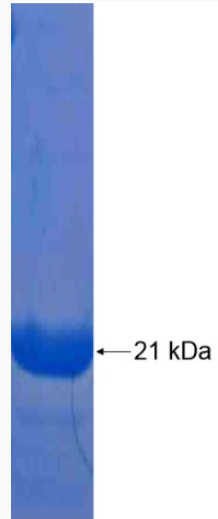
UniProt ID P01258

 Tel: 1-631-559-9269 1-516-512-3133

 Email: info@creative-biomart.com  Fax: 1-631-938-8127

 45-1 Ramsey Road, Shirley, NY 11967, USA

SDS-PAGE



 Tel: 1-631-559-9269 1-516-512-3133

 Email: info@creative-biomart.com  Fax: 1-631-938-8127

 45-1 Ramsey Road, Shirley, NY 11967, USA