

Recombinant Dog CALCA Protein, His-tagged

Cat. No. CALCA-707D Lot. No. (See product label)

SPECIFICATION

Product Overview	Recombinant Dog CALCA(Ala26~Arg130) fused with His tag at N-terminal was expressed in E. coli.
Species	Dog
Source	E.coli
ProteinLength	Ala26~Arg130
Description	CALCA played an important role in many functions.
Form	PBS, pH7.4, containing 0.01% SKL, 1mM DTT, 5% Trehalose and Proclin300.
Molecular Mass	15.1kDa
Identity	Reconstitute in PBS or others
Endotoxin	<1.0EU per 1g (determined by the LAL method)
Purity	> 95%
Applications	Positive Control; Immunogen; SDS-PAGE; WB. If bio-activity of the protein is needed, please check active protein
Stability	The thermal stability is described by the loss rate. The loss rate was determined by

 Tel: 1-631-559-9269 1-516-512-3133

 Email: info@creative-biomart.com  Fax: 1-631-938-8127

 45-1 Ramsey Road, Shirley, NY 11967, USA

accelerated thermal degradation test, that is, incubate the protein at 37 centigrade for 48h, and no obvious degradation and precipitation were observed. The loss rate is less than 5% within the expiration date under appropriate storage condition.

Storage

Avoid repeated freeze/thaw cycles. Store at 2-8 centigrade for one month. Aliquot and store at -80 centigrade for 12 months.

Reconstitution

Reconstitute in PBS or others

GENE INFORMATION

Gene Name

CALCA calcitonin-related polypeptide alpha [*Canis lupus familiaris*]

Official Symbol

CALCA

Synonyms

CALCA; calcitonin-related polypeptide alpha; calcitonin; calcitonin/calcitonin-related polypeptide, alpha;

Gene ID

403946

mRNA Refseq

NM_001003266

Protein Refseq

NP_001003266

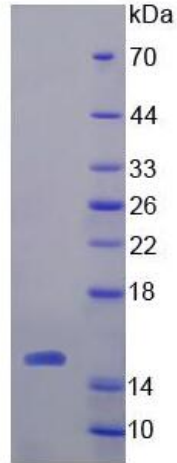
UniProt ID

P41547

 Tel: 1-631-559-9269 1-516-512-3133

 Email: info@creative-biomart.com  Fax: 1-631-938-8127

 45-1 Ramsey Road, Shirley, NY 11967, USA



15% SDS-PAGE

Tel: 1-631-559-9269 1-516-512-3133

Email: info@creative-biomart.com Fax: 1-631-938-8127

45-1 Ramsey Road, Shirley, NY 11967, USA