

Recombinant Human CALCB Protein, Myc/DDK-tagged, C13 and N15-labeled

Cat. No. CALCB-6103H Lot. No. (See product label)

SPECIFICATION

Product Overview	CALCB MS Standard C13 and N15-labeled recombinant protein (NP_000719) with a C-terminal MYC/DDK tag, was expressed in HEK293 cells.
Species	Human
Source	HEK293
Description	CGRP induces vasodilation. It dilates a variety of vessels including the coronary, cerebral and systemic vasculature. Its abundance in the CNS also points toward a neurotransmitter or neuromodulator role.
Molecular Mass	13.7 kDa
AA Sequence	MGFRKFSPFLALSILVLYQAGSLQAAPFRSALESSPDPATLSKEDARLLLAALVQDYV QMKASELKQEQETQGSSSAAQKRACNTATCVTHRLAGLLSRSGGMVKSNFVPTNV GSKAFGRRRRDLQATRTRPLEQKLISEEDLAANDILDYKDDDDKV
Purity	> 80% as determined by SDS-PAGE and Coomassie blue staining
Stability	Stable for 3 months from receipt of products under proper storage and handling conditions.
Storage	Store at -80 centigrade. Avoid repeated freeze-thaw cycles.

 Tel: 1-631-559-9269 1-516-512-3133

 Email: info@creative-biomart.com  Fax: 1-631-938-8127

 45-1 Ramsey Road, Shirley, NY 11967, USA

Concentration 50 µg/mL as determined by BCA

Storage Buffer 100 mM glycine, 25 mM Tris-HCl, pH 7.3.

GENE INFORMATION

Gene Name [CALCB calcitonin-related polypeptide beta \[Homo sapiens \(human\) \]](#)

Official Symbol [CALCB](#)

Synonyms CALCB; calcitonin-related polypeptide beta; CALC2, calcitonin 2; calcitonin gene-related peptide 2; CGRP II; FLJ30166; beta-CGRP; calcitonin 2; beta-type CGRP; calcitonin gene-related peptide II; CALC2; CGRP2; CGRP-II;

Gene ID [797](#)

mRNA Refseq [NM_000728](#)

Protein Refseq [NP_000719](#)

MIM [114160](#)

UniProt ID [P10092](#)

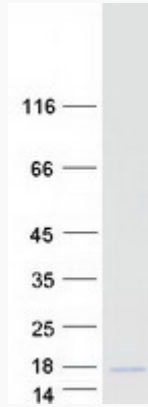
 Tel: 1-631-559-9269 1-516-512-3133

 Email: info@creative-biomart.com  Fax: 1-631-938-8127

 45-1 Ramsey Road, Shirley, NY 11967, USA



SDS-PAGE



Tel: 1-631-559-9269 1-516-512-3133

Email: info@creative-biomart.com Fax: 1-631-938-8127

45-1 Ramsey Road, Shirley, NY 11967, USA