

Recombinant Human CALCB protein, His-tagged

Cat. No. CALCB-7865H Lot. No. (See product label)

SPECIFICATION

Product Overview	Recombinant Human CALCB aa. (Met1~Ala127) fused with N-terminal His tag was produced in E. coli cells.
Species	Human
Source	E.coli
ProteinLength	Met1~Ala127
Form	Freeze-dried powder
Molecular Mass	19kDa as determined by SDS-PAGE reducing conditions
Endotoxin	<1.0EU per 1g (determined by the LAL method)
Purity	>95%
Characteristic	The isoelectric point is 9.9.
Applications	SDS-PAGE; WB; ELISA; IP; CoIP; Purification; Amine Reactive Labeling.
Stability	The thermal stability is described by the loss rate. The loss rate was determined by accelerated thermal degradation test, that is, incubate the protein at 37°C for 48h, and no obvious degradation and precipitation were observed. The loss rate is less than 5% within the expiration date under appropriate storage condition.

 Tel: 1-631-559-9269 1-516-512-3133

 Email: info@creative-biomart.com  Fax: 1-631-938-8127

 45-1 Ramsey Road, Shirley, NY 11967, USA

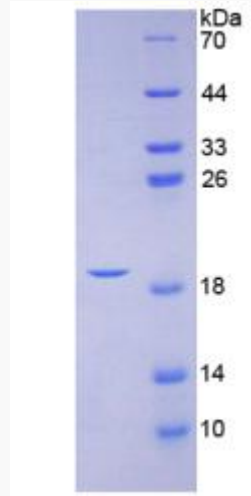


Storage	Avoid repeated freeze/thaw cycles. Store at 2-8°C for one month. Aliquot and store at -80°C for 12 months.
Concentration	200µg/mL
Storage buffer	20mM Tris, 150mM NaCl, pH8.0, containing 1mM EDTA, 1mM DTT, 0.01% sarcosyl, 5%Trehalose and Proclin300.
Reconstitution	Reconstitute in 20mM Tris, 150mM NaCl (pH8.0) to a concentration of 0.1-1.0 mg/mL. Do not vortex.

GENE INFORMATION

Gene Name	CALCB calcitonin related polypeptide beta [Homo sapiens (human)]
Official Symbol	CALCB
Synonyms	CALCB; calcitonin related polypeptide beta; CALC2; CGRP2; CGRP-II; calcitonin gene-related peptide 2; beta-CGRP; beta-type CGRP; calcitonin 2; calcitonin gene-related peptide II
Gene ID	797
mRNA Refseq	NM_000728.3
Protein Refseq	NP_000719.1
UniProt ID	P10092

SDS-PAGE



 Tel: 1-631-559-9269 1-516-512-3133

 Email: info@creative-biomart.com  Fax: 1-631-938-8127

 45-1 Ramsey Road, Shirley, NY 11967, USA