

Recombinant Human CALCR Protein, GST-Tagged

Cat. No. CALCR-0296H Lot. No. (See product label)

SPECIFICATION

Product Overview Human CALCR full-length ORF (NP_001733.1, 1 a.a. - 474 a.a.) recombinant protein with GST-tag at N-terminal.

Species Human

Source Wheat Germ

Description This gene encodes a high affinity receptor for the peptide hormone calcitonin and belongs to a subfamily of seven transmembrane-spanning G protein-coupled receptors. The encoded protein is involved in maintaining calcium homeostasis and in regulating osteoclast-mediated bone resorption. Polymorphisms in this gene have been associated with variations in bone mineral density and onset of osteoporosis. Alternate splicing results in multiple transcript variants. [provided by RefSeq, Sep 2009]

Molecular Mass 81.7 kDa

AA Sequence MRFTFTSRCLALFLLLNHPTILPAFSNQTYPTIEPKPFLYVVGRRKKMMDAQYKCYDR
MQQLPAYQGEGPYCNRTWDGWLCWDDTPAGVLSYQFCPDYFPDFDPSEKVTKYC
DEKGVWFKHPENNRTWSNYTMCNAFTPEKLNAYVLYYLAIVGHSLSIFTLVISLGIF
VFFRSLGCQRVTLHKNMFLTYILNSMIIIIHLVEVVPNGELVRRDPVSKILHFFHQYM
MACNYFWMLCEGIY LHTLIVVAVFTEKQRLRWYLLGWGFPLVPTTIHAITRAVYFND
NCWLSVETHLLYIIHGPVMAALVVNFFLLNIVRVLVTKMRETHEAESHMYLKAVKAT
MILVPLLGIQFVFPWRPSNKMLGKIYDYMHS LIHFQGFVATIYCFCNNEVQTTVK

 Tel: 1-631-559-9269 1-516-512-3133

 Email: info@creative-biomart.com  Fax: 1-631-938-8127

 45-1 Ramsey Road, Shirley, NY 11967, USA

RQWAQFKIQWNQRWGRRPSNRSARAAAAAAEAGDIPYICHQELRNEPANNQGEE
SAEIPLNIIQESEA

Applications
Enzyme-linked Immunoabsorbent Assay
Western Blot (Recombinant protein)
Antibody Production
Protein Array

Notes
Best use within three months from the date of receipt of this protein.

Storage
Store at -80 centigrade. Aliquot to avoid repeated freezing and thawing.

Storage Buffer
50 mM Tris-HCl, 10 mM reduced Glutathione, pH=8.0 in the elution buffer.

GENE INFORMATION

Gene Name [CALCR calcitonin receptor \[Homo sapiens \]](#)

Official Symbol [CALCR](#)

Synonyms CALCR; calcitonin receptor; CTR; CRT; CT-R; CTR1;

Gene ID [799](#)

mRNA Refseq [NM_001164737](#)

Protein Refseq [NP_001158209](#)

MIM [114131](#)

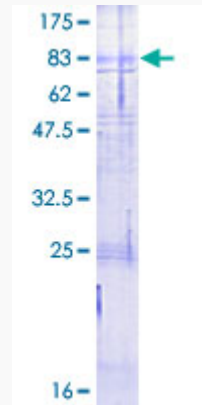
UniProt ID [P30988](#)

 Tel: 1-631-559-9269 1-516-512-3133

 Email: info@creative-biomart.com  Fax: 1-631-938-8127

 45-1 Ramsey Road, Shirley, NY 11967, USA

**Quality Control
Testing**



12.5% SDS-PAGE Stained with Coomassie Blue.

 Tel: 1-631-559-9269 1-516-512-3133

 Email: info@creative-biomart.com  Fax: 1-631-938-8127

 45-1 Ramsey Road, Shirley, NY 11967, USA