

## Recombinant Human CALCRL Protein, GST-Tagged

Cat. No. CALCRL-0299H Lot. No. (See product label)

### SPECIFICATION

<b>Product Overview</b>	Human CALCRL full-length ORF (NP_005786.1, 1 a.a. - 461 a.a.) recombinant protein with GST-tag at N-terminal.
<b>Species</b>	Human
<b>Source</b>	Wheat Germ
<b>Description</b>	CALCRL (Calcitonin Receptor Like Receptor) is a Protein Coding gene. Diseases associated with CALCRL include Pheochromocytoma and Migraine With Or Without Aura 1. Among its related pathways are Vascular smooth muscle contraction and Endothelin Pathways. GO annotations related to this gene include G-protein coupled receptor activity and protein transporter activity. An important paralog of this gene is CALCR.
<b>Molecular Mass</b>	76.34 kDa
<b>AA Sequence</b>	MEKKCTLYFLVLLPFFMILVTAELEESPEDSIQLGVTRNKIMTAQYECYQKIMQDPIQQ AEGVYCNRTWDGWLCWNDVAAGTESMQLCPDYFQDFDPSEKVTKICDQDGNWFR HPASNRTWTNYTQCNVNTHEKVKTALNLFYLTIIHGHLISIASLLISLGIFFYFKSLSCQ RITLHKNLFFSFVCNSVVTIIHLTAVANNQALVATNPVSCKVSQFIHLYLMGCNYFWM LCEGIY LHTLIVVAVFAEKQHLMWYYFLGWGFPLIPACIHAIARSLYNDNCWISSDT HLLYIIHGPICAALLVNLFFLLNIVRVLITKLKVTHQAESNLYMKAVRATLILVPLLGIEFV LIPWRPEGKIAEEVYDYIMHILMHFQGLLVSTIFCFFNGEVQAILRRNWNQYKIQFGN SFSNSEALRSASYTVSTISDGPGYSHDCPSEHLNGKSIHDIENVLLKPENLYN

 Tel: 1-631-559-9269 1-516-512-3133

 Email: [info@creative-biomart.com](mailto:info@creative-biomart.com)  Fax: 1-631-938-8127

 45-1 Ramsey Road, Shirley, NY 11967, USA

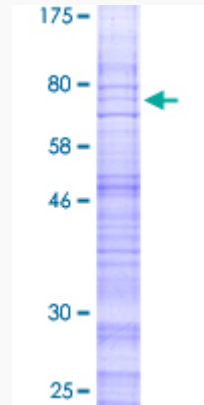
<b>Applications</b>	Enzyme-linked Immunoabsorbent Assay Western Blot (Recombinant protein) Antibody Production Protein Array
<b>Notes</b>	Best use within three months from the date of receipt of this protein.
<b>Storage</b>	Store at -80 centigrade. Aliquot to avoid repeated freezing and thawing.
<b>Storage Buffer</b>	50 mM Tris-HCl, 10 mM reduced Glutathione, pH=8.0 in the elution buffer.
<b>GENE INFORMATION</b>	
<b>Gene Name</b>	<a href="#">CALCRL</a> calcitonin receptor-like [ Homo sapiens ]
<b>Official Symbol</b>	<a href="#">CALCRL</a>
<b>Synonyms</b>	CALCRL; calcitonin receptor-like; calcitonin gene-related peptide type 1 receptor; CGRPR; CRLR; CGRP type 1 receptor; calcitonin receptor-like receptor;
<b>Gene ID</b>	<a href="#">10203</a>
<b>mRNA Refseq</b>	<a href="#">NM_005795</a>
<b>Protein Refseq</b>	<a href="#">NP_005786</a>
<b>MIM</b>	<a href="#">114190</a>
<b>UniProt ID</b>	<a href="#">Q16602</a>

 Tel: 1-631-559-9269 1-516-512-3133

 Email: [info@creative-biomart.com](mailto:info@creative-biomart.com)  Fax: 1-631-938-8127

 45-1 Ramsey Road, Shirley, NY 11967, USA

**Quality Control  
Testing**



12.5% SDS-PAGE Stained with Coomassie Blue.

 Tel: 1-631-559-9269 1-516-512-3133

 Email: [info@creative-biomart.com](mailto:info@creative-biomart.com)  Fax: 1-631-938-8127

 45-1 Ramsey Road, Shirley, NY 11967, USA