

Recombinant Human CALD1 Protein, GST-Tagged

Cat. No. CALD1-0301H Lot. No. (See product label)

SPECIFICATION

Product Overview	Human CALD1 full-length ORF (NP_004333.1, 1 a.a. - 538 a.a.) recombinant protein with GST-tag at N-terminal.
Species	Human
Source	Wheat Germ
Description	This gene encodes a calmodulin- and actin-binding protein that plays an essential role in the regulation of smooth muscle and nonmuscle contraction. The conserved domain of this protein possesses the binding activities to Ca(2+)-calmodulin, actin, tropomyosin, myosin, and phospholipids. This protein is a potent inhibitor of the actin-tropomyosin activated myosin MgATPase, and serves as a mediating factor for Ca(2+)-dependent inhibition of smooth muscle contraction. Alternative splicing of this gene results in multiple transcript variants encoding distinct isoforms. [provided by RefSeq, Jul 2008]
Molecular Mass	89.1 kDa
AA Sequence	MDDFERRRELRRQKREEMRLEAERIAAYQRNDDDEEEAARERRRRARQERLRQKQ EEESLGQVTDQVEVNAQNSVPDEEAKTTTTNTQVEGDDEAAFLERLARREERRQK RLQEALERQKEFDPTITDASLSLPSRRMQNDAENETTEKEEKSESQRERYEIEETE TVTKSYQKNDWRDAEENKKEDKEKEEEEEKPKRGSIGENQIKDEKIKKDKPEKKEEV KSFMDRKKGFTEVKSQNGEFMTHKLKHTENTFSRPGGRASVDTKEAEGAPQVEAG KRLEELRRRRGETESEEFELKQKQQAALALELKKKREERRKVLLEEEEQRRKQE

 Tel: 1-631-559-9269 1-516-512-3133

 Email: info@creative-biomart.com  Fax: 1-631-938-8127

 45-1 Ramsey Road, Shirley, NY 11967, USA

EADRKLREEEEEKRRLKEEIERRRAEAAEKRQKMPEDGLSDDKKPFKCFKTPKGSSLKI
 EERAFLNKSQKSSGVKSTHQAAIVSKIDSRLEQYTSIAIEGTKSAKPTKPAASDLPV
 PAEGVRNIKSMWEKGNVSSPTAAGTPNKETAGLKVGVSSRINEWLTKTPDGNKSP
 APKPSDLRPGDVSSKRNLWEKQSVDKVTSPTKV

Applications	Enzyme-linked Immunoabsorbent Assay Western Blot (Recombinant protein) Antibody Production Protein Array
Notes	Best use within three months from the date of receipt of this protein.
Storage	Store at -80 centigrade. Aliquot to avoid repeated freezing and thawing.
Storage Buffer	50 mM Tris-HCl, 10 mM reduced Glutathione, pH=8.0 in the elution buffer.

GENE INFORMATION

Gene Name	CALD1 caldesmon 1 [Homo sapiens]
Official Symbol	CALD1
Synonyms	CALD1; caldesmon 1; caldesmon; CDM; H CAD; L CAD; HCAD; LCAD; H-CAD; L-CAD; NAG22; MGC21352;
Gene ID	800
mRNA Refseq	NM_033138
Protein Refseq	NP_149129

 Tel: 1-631-559-9269 1-516-512-3133

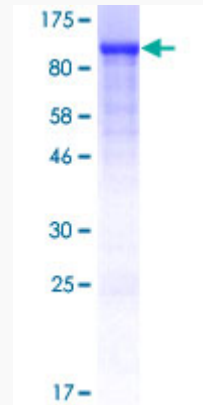
 Email: info@creative-biomart.com  Fax: 1-631-938-8127

 45-1 Ramsey Road, Shirley, NY 11967, USA

MIM 114213

UniProt ID Q05682

**Quality Control
Testing**



12.5% SDS-PAGE Stained with Coomassie Blue.

 Tel: 1-631-559-9269 1-516-512-3133

 Email: info@creative-biomart.com  Fax: 1-631-938-8127

 45-1 Ramsey Road, Shirley, NY 11967, USA