

Recombinant Human CALD1 Protein, Myc/DDK-tagged, C13 and N15-labeled

Cat. No. CALD1-2635H Lot. No. (See product label)

SPECIFICATION

Product Overview

CALD1 MS Standard C13 and N15-labeled recombinant protein (NP_149347) with a C-terminal MYC/DDK tag, was expressed in HEK293 cells.

Species

Human

Source

HEK293

Description

This gene encodes a calmodulin- and actin-binding protein that plays an essential role in the regulation of smooth muscle and nonmuscle contraction. The conserved domain of this protein possesses the binding activities to Ca(2+)-calmodulin, actin, tropomyosin, myosin, and phospholipids. This protein is a potent inhibitor of the actin-tropomyosin activated myosin MgATPase, and serves as a mediating factor for Ca(2+)-dependent inhibition of smooth muscle contraction. Alternative splicing of this gene results in multiple transcript variants encoding distinct isoforms.

Molecular Mass

65.4 kDa

AA Sequence

MDDFERRRELRRQKREEMRLEAERIAAYQRNDDDEEEAARERRRRARQERLRQKQ
 EEESLGQVTDQVEVNAQNSVPDEEAKTTTTNTQVEGDDEAAFLERLARREERRQK
 RLQEALERQKEFDPTITDASLSLPSRRMQNDAENETTEKEEKSESRQERYEIEETE
 TVTKSYQKNDWRDAEENKKEDKEKEEEEEKPKRGSIGENQGEEKGTKVQAKREK
 LQEDKPTFKKEEIKDEKIKKDKPEKKEEVKSFMDRKKGFTEVKSQNGEFMTHKHKHTE
 NTFSRPGGRASVDTKEAEGAPQVEAGKRLEELRRRRGETESEEFELKQKQQEAA

 Tel: 1-631-559-9269 1-516-512-3133

 Email: info@creative-biomart.com  Fax: 1-631-938-8127

 45-1 Ramsey Road, Shirley, NY 11967, USA

LELEELKKKREERRKVLEEEEEQRRKQEEADRKLREEEEEKRRLKEEIERRRAEAAEKR
 QKMPEDGLSDDKKPFKCFTPKGSSSLKIEERAFLNKSQKSSGVKSTHQAIVSKID
 SRLEQY TSAIEGTKSAKPTKPAASDLPVPAEGVRNIKSMWEKGNVSSPTAAGTPNK
 ETAGLKVGVSSRINEWLTKTPDGNKSPAPKPSDLRPGDVSSKRNLWEKQSVDKVTS
 PTKVTRTRPLEQKLISEEDLAANDILDYKDDDDKV

Purity > 80% as determined by SDS-PAGE and Coomassie blue staining

Stability Stable for 3 months from receipt of products under proper storage and handling conditions.

Storage Store at -80 centigrade. Avoid repeated freeze-thaw cycles.

Concentration 50 µg/mL as determined by BCA

Storage Buffer 100 mM glycine, 25 mM Tris-HCl, pH 7.3.

GENE INFORMATION

Gene Name CALD1 caldesmon 1 [Homo sapiens (human)]

Official Symbol CALD1

Synonyms CALD1; caldesmon 1; caldesmon; CDM; H CAD; L CAD; HCAD; LCAD; H-CAD; L-CAD; NAG22; MGC21352;

Gene ID 800

mRNA Refseq NM_033157

Protein Refseq NP_149347

 Tel: 1-631-559-9269 1-516-512-3133

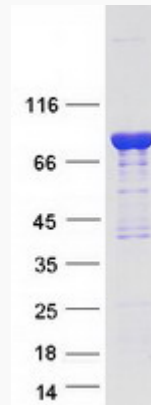
 Email: info@creative-biomart.com  Fax: 1-631-938-8127


 45-1 Ramsey Road, Shirley, NY 11967, USA

MIM 114213

UniProt ID Q05682

SDS-PAGE



 Tel: 1-631-559-9269 1-516-512-3133

 Email: info@creative-biomart.com  Fax: 1-631-938-8127

 45-1 Ramsey Road, Shirley, NY 11967, USA