

Active Recombinant Human CALM1 Protein

Cat. No. CALM1-01H Lot. No. (See product label)

SPECIFICATION

Product Overview	Recombinant Human CALM1 Protein without tag was expressed in E. coli.
Species	Human
Source	E.coli
Description	This gene encodes one of three calmodulin proteins which are members of the EF-hand calcium-binding protein family. Calcium-induced activation of calmodulin regulates and modulates the function of cardiac ion channels. Two pseudogenes have been identified on chromosome 7 and X. Multiple transcript variants encoding different isoforms have been found for this gene. A missense mutation in the CALM1 gene has been associated with ventricular tachycardia.
Form	Lyophilized. Salt-free.
Bio-activity	Elicits Ca ²⁺ -dependent activation of calcineurin (Ca ²⁺ /calmodulin-dependent Ser/Thr protein phosphatase 2B, PP-2B) with the same potency and to the same maximum extent as purified native calmodulin.
Molecular Mass	16.8 kDa
Purity	≥95% (SDS-PAGE)
Applications	Calmodulin can be used to activate calmodulin-dependent phosphodiesterase, calcineurin, CaM kinases, etc.

 Tel: 1-631-559-9269 1-516-512-3133

 Email: info@creative-biomart.com  Fax: 1-631-938-8127

 45-1 Ramsey Road, Shirley, NY 11967, USA

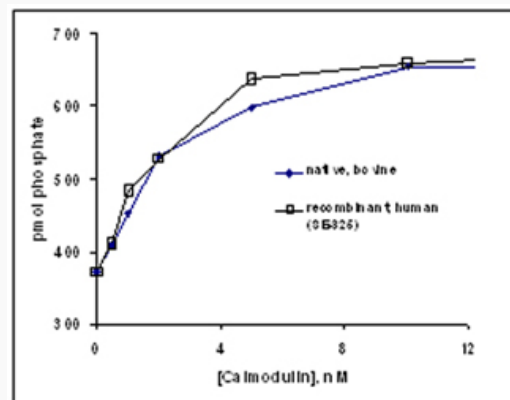
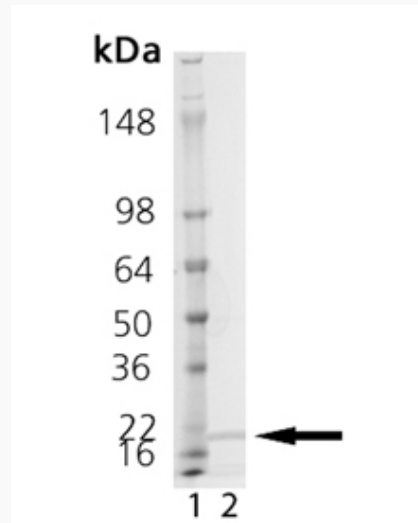
Storage	Long Term Storage at -20 centigrade.
Reconstitution	Reconstitute in water or an appropriate buffer.
Shipping	Shipped on Blue Ice
GENE INFORMATION	
Gene Name	CALM1 calmodulin 1 [Homo sapiens (human)]
Official Symbol	CALM1
Synonyms	CALM1; calmodulin 1; caM; CAM2; CAM3; CAMB; CAMC; CAMI; PHKD; CPVT4; DD132; LQT14; PHKD1; CALML2; CAMIII; calmodulin-1; Calmodulin-2; Calmodulin-3; calmodulin 1 (phosphorylase kinase, delta); phosphorylase kinase subunit delta; phosphorylase kinase subunit delta 1; phosphorylase kinase, delta subunit; prepro-calmodulin 1; EC 2.7.11.19
Gene ID	801
mRNA Refseq	NM_006888
Protein Refseq	NP_008819
MIM	114180
UniProt ID	B4DJ51

 Tel: 1-631-559-9269 1-516-512-3133

 Email: info@creative-biomart.com  Fax: 1-631-938-8127

 45-1 Ramsey Road, Shirley, NY 11967, USA

SDS-PAGE



 Tel: 1-631-559-9269 1-516-512-3133

 Email: info@creative-biomart.com  Fax: 1-631-938-8127

 45-1 Ramsey Road, Shirley, NY 11967, USA