


Recombinant Human CALM1 protein, His-tagged

Cat. No. CALM1-5358H Lot. No. (See product label)


SPECIFICATION

Product Overview	Recombinant Human CALM1 protein(P0DP23)(2-149aa), fused to N-terminal His tag, was expressed in Yeast.
Species	Human
Source	Yeast
ProteinLength	2-149aa
Form	If the delivery form is liquid, the default storage buffer is Tris/PBS-based buffer, 5%-50% glycerol. If the delivery form is lyophilized powder, the buffer before lyophilization is Tris/PBS-based buffer, 6% Trehalose, pH 8.0.
Molecular Mass	18.7 kDa
Purity	Greater than 90% as determined by SDS-PAGE.
Storage	Store at -20°C/-80°C upon receipt, aliquoting is necessary for mutiple use. Avoid repeated freeze-thaw cycles.
Reconstitution	Please reconstitute protein in deionized sterile water to a concentration of 0.1-1.0 mg/mL. We recommend to add 5-50% of glycerol (final concentration) and aliquot for long-term storage at -20°C/-80°C. Our default final concentration of glycerol is 50%.

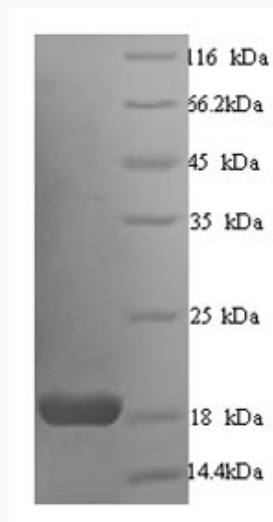
GENE INFORMATION


 Tel: 1-631-559-9269 1-516-512-3133

 Email: info@creative-biomart.com  Fax: 1-631-938-8127

 45-1 Ramsey Road, Shirley, NY 11967, USA

Gene Name	CALM1 calmodulin 1 (phosphorylase kinase, delta) [Homo sapiens]
Official Symbol	CALM1
Synonyms	CALM1; calmodulin 1 (phosphorylase kinase, delta); CALML2; calmodulin; CAMI; DD132; PHKD; phosphorylase kinase, delta subunit; caM; CALM2; CALM3;
Gene ID	801
mRNA Refseq	NM_006888
Protein Refseq	NP_008819
MIM	114180
UniProt ID	P62158

SDS-PAGE


 Tel: 1-631-559-9269 1-516-512-3133

 Email: info@creative-biomart.com  Fax: 1-631-938-8127

 45-1 Ramsey Road, Shirley, NY 11967, USA