

# Active Recombinant Human Calmodulin 1 (Phosphorylase Kinase, Delta)

Cat. No. CALM1-88H Lot. No. (See product label)

## SPECIFICATION

<b>Product Overview</b>	Recombinant Human Calmodulin full length protein expressed in <i>E.coli</i> .
<b>Species</b>	Human
<b>Source</b>	E.coli
<b>Description</b>	Calmodulin (CaM) is an intracellular receptor protein for Ca <sup>2+</sup> -ions. It activates the myosin light chain kinase which is the catalyst of myosin phosphorylation. CaM participates in the activation of enzymes such as cyclic nucleotide- dependent phosphodiesterase, calcineurin, ATPase, Myosin Light Chain Kinases, and CAM kinase.
<b>Physical Appearance</b>	Sterile Filtered clear solution.
<b>Purity</b>	Greater than 90% as determined by SDS-PAGE.
<b>Formulation</b>	Calmodulin at 1mg/ml in 20mM HEPES-KOH, pH7, 50mM NaCl, 1mM EDTA and 1mM DTT.
<b>Activity</b>	Assayed for calcium binding and activation of MLCK.
<b>Applications</b>	• ELISA • Inhibition Assays • Western Blotting
<b>Storage</b>	Store vial at -20°C to -80°C. When stored at the recommended temperature, this

 Tel: 1-631-559-9269 1-516-512-3133

 Email: [info@creative-biomart.com](mailto:info@creative-biomart.com)  Fax: 1-631-938-8127

 45-1 Ramsey Road, Shirley, NY 11967, USA

protein is stable for 12 months. Please prevent freeze-thaw cycles.

**Full Length** Full L.

## GENE INFORMATION

**Gene Name** CALM1 calmodulin 1 (phosphorylase kinase, delta) [ Homo sapiens ]

**Synonyms** CALM1; calmodulin 1 (phosphorylase kinase, delta); CAMI; PHKD; DD132; CALML2; calmodulin 1; phosphorylase kinase, delta subunit; EC 2.7.11.19; CALMCAM; CAM1; CAM2; CAM3; CAMB; CAMC; CAMIII; CaM

**Gene ID** 801

**mRNA Refseq** [NM\\_001166106](#)

**Protein Refseq** [NP\\_001159578](#)

**MIM** 114180

**UniProt ID** [P62158](#)

**Chromosome Location** 14q24-q31

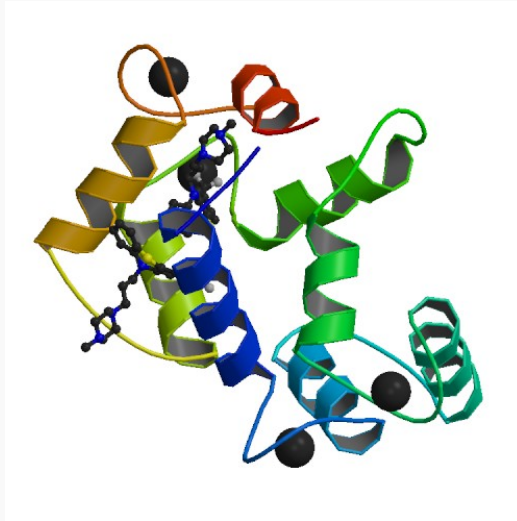
**Pathway** Alzheimer"s disease; Calcium signaling pathway; Glioma; GnRH signaling pathway; Insulin signaling pathway; Long-term potentiation; Melanogenesis; Neurotrophin signaling pathway; Olfactory transduction; Phosphatidylinositol signaling system; Vascular smooth muscle contraction

 Tel: 1-631-559-9269 1-516-512-3133

 Email: [info@creative-biomart.com](mailto:info@creative-biomart.com)  Fax: 1-631-938-8127

 45-1 Ramsey Road, Shirley, NY 11967, USA

PDB rendering based  
on 1a29.



 Tel: 1-631-559-9269 1-516-512-3133

 Email: [info@creative-biomart.com](mailto:info@creative-biomart.com)  Fax: 1-631-938-8127

 45-1 Ramsey Road, Shirley, NY 11967, USA