

## Recombinant Human calreticulin Protein, His-tagged

**Cat. No.** CALR-001H    **Lot. No.** (See product label)

### SPECIFICATION

<b>Product Overview</b>	Recombinant Human CALR Protein (18-180aa) with C-His-tag was expressed E. coli.
<b>Species</b>	Human
<b>Source</b>	E.coli
<b>ProteinLength</b>	18-180aa
<b>Description</b>	Calreticulin is a highly conserved chaperone protein which resides primarily in the endoplasmic reticulum, and is involved in a variety of cellular processes, among them, cell adhesion. Additionally, it functions in protein folding quality control and calcium homeostasis. Calreticulin is also found in the nucleus, suggesting that it may have a role in transcription regulation. Systemic lupus erythematosus is associated with increased autoantibody titers against calreticulin. Recurrent mutations in calreticulin have been linked to various neoplasms, including the myeloproliferative type.
<b>Tag</b>	C-His
<b>Molecular Mass</b>	20 kDa
<b>AA Sequence</b>	MEPAVYFKEQFLDGDGWTSRWIESKHKSDFGKFLSSGKFGDEEKDKGLQTSQD ARFYALSASFEPFSNKGQTLVVQFTVKHEQNIDCGGGYVKLFPNSLDQTDMHGDSE YNIMFGPDICGPGTKKVHVIFNYKGNVLINKDIRCKDDEFTHLYTLIVRPDNHHHHH HHH

 Tel: 1-631-559-9269    1-516-512-3133

 Email: [info@creative-biomart.com](mailto:info@creative-biomart.com)     Fax: 1-631-938-8127

 45-1 Ramsey Road, Shirley, NY 11967, USA

<b>Endotoxin</b>	< 1 EU/μg by LAL.
<b>Purity</b>	> 90 % by SDS-PAGE
<b>Storage</b>	Store it under sterile conditions at -20 to -80 centigrade. It is recommended that the protein be aliquoted for optimal storage. Avoid repeated freeze-thaw cycles.
<b>Concentration</b>	1 mg/mL by BCA
<b>Storage Buffer</b>	Sterile PBS, pH 7.4, 8 % Trehalose, 10 % Glycerol

## GENE INFORMATION

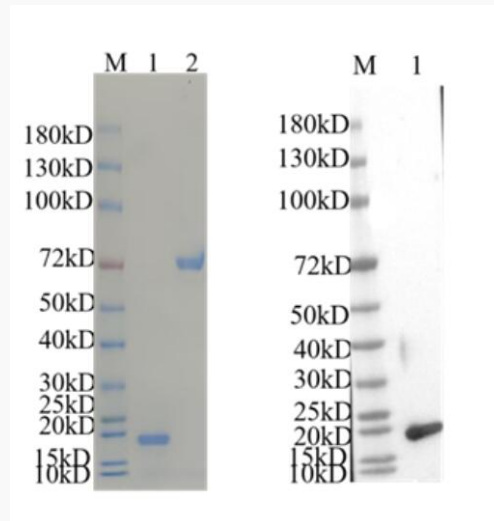
<b>Gene Name</b>	CALR calreticulin [Homo sapiens (human)]
<b>Official Symbol</b>	CALR
<b>Synonyms</b>	CALR; calreticulin; autoantigen Ro; cC1qR; CRT; FLJ26680; RO; Sicca syndrome antigen A (autoantigen Ro; calreticulin); SSA; CRP55; ERp60; HACBP; grp60; calregulin; endoplasmic reticulum resident protein 60; Sicca syndrome antigen A (autoantigen Ro; calreticulin)
<b>Gene ID</b>	811
<b>mRNA Refseq</b>	NM_004343
<b>Protein Refseq</b>	NP_004334
<b>MIM</b>	109091
<b>UniProt ID</b>	P27797

 Tel: 1-631-559-9269 1-516-512-3133

 Email: [info@creative-biomart.com](mailto:info@creative-biomart.com)  Fax: 1-631-938-8127

 45-1 Ramsey Road, Shirley, NY 11967, USA

Reducing 4 %-20 %  
SDS-PAGE (CBB  
stained) and WB  
(Anti-His Mouse  
Monoclonal  
antibody) analysis  
profiles of purified  
CALR.



1. CALR
2. BSA

 Tel: 1-631-559-9269 1-516-512-3133

 Email: [info@creative-biomart.com](mailto:info@creative-biomart.com)  Fax: 1-631-938-8127

 45-1 Ramsey Road, Shirley, NY 11967, USA