

## Recombinant Human CALR Protein

**Cat. No.** CALR-06H    **Lot. No.** (See product label)

### SPECIFICATION

**Product Overview**      Recombinant Human CALR Protein was expressed in E. coli.

**Species**                      Human

**Source**                        E.coli

**Description**                Calreticulin is a highly conserved chaperone protein which resides primarily in the endoplasmic reticulum, and is involved in a variety of cellular processes, among them, cell adhesion. Additionally, it functions in protein folding quality control and calcium homeostasis. Calreticulin is also found in the nucleus, suggesting that it may have a role in transcription regulation. Systemic lupus erythematosus is associated with increased autoantibody titers against calreticulin. Recurrent mutations in calreticulin have been linked to various neoplasms, including the myeloproliferative type.

**Form**                            Liquid. In 20 mM Tris-HCl, 150 mM NaCl, 5 mM CaCl<sub>2</sub>, pH 8.0, with 10% glycerol.

**Molecular Mass**            ~45 kDa

**AA Sequence**                MSRWIESKHKSDFGKFLSSGKFYGDDEEKDKGLQTSQDARFYALSASFEPFSNKGQ  
 TLVVQFTVKHEQNIDCGGGYVKLFPNSLDQTDMHGDSEYNIMFGPDICGPGTKKVH  
 VIFNYKGNVLINKDIRCKDDEFTHLYTLIVRPDNTYEVKIDNSQVESGSLEDDWDFL  
 PPKIKDPDASKPEDWDERAKIDDPTDSKPEDWDKPEHIPDPDAKKPEDWDEEMD  
 GEWEPPIQNPEYKGEWKPRQIDNPDYKGTWIHPEIDNPEYSPDPSIYAYDNFGVL  
 GLDLWQVKSGTIFDNFLITNDEAYAEFFGNETWGVTKAAEKQMKDKQDEEQRLKEE  
 EEDKKRKEEEEEAEDEKEDDEDKDEDEEDEDKEEEDDEEDVPGQAKDEL

 Tel: 1-631-559-9269    1-516-512-3133

 Email: [info@creative-biomart.com](mailto:info@creative-biomart.com)     Fax: 1-631-938-8127

 45-1 Ramsey Road, Shirley, NY 11967, USA

<b>Endotoxin</b>	<1 EU/ug as determined by LAL method.
<b>Purity</b>	>90%
<b>Storage</b>	Short Term Storage at 4 centigrade, Long Term, please prepare aliquots with 20% glycerol and store at -20 to -80 centigrade. Avoid freeze/thaw cycles.
<b>Concentration</b>	0.17 mg/ml
<b>Official Full Name</b>	Calreticulin

## GENE INFORMATION

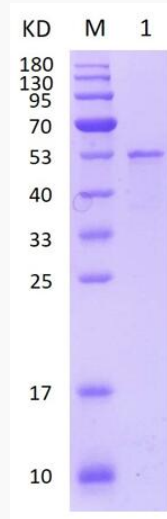
<b>Gene Name</b>	CALR calreticulin [ Homo sapiens (human) ]
<b>Official Symbol</b>	CALR
<b>Synonyms</b>	RO; CRT; SSA; cC1qR; HEL-S-99n
<b>Gene ID</b>	811
<b>mRNA Refseq</b>	NM_004343
<b>Protein Refseq</b>	NP_004334
<b>MIM</b>	109091
<b>UniProt ID</b>	P27797

 Tel: 1-631-559-9269 1-516-512-3133

 Email: [info@creative-biomart.com](mailto:info@creative-biomart.com)  Fax: 1-631-938-8127

 45-1 Ramsey Road, Shirley, NY 11967, USA

**SDS-PAGE**



15% SDS-PAGE analysis profiles of purified Recombinant Human CALR (CBB stained).

 Tel: 1-631-559-9269 1-516-512-3133

 Email: [info@creative-biomart.com](mailto:info@creative-biomart.com)  Fax: 1-631-938-8127

 45-1 Ramsey Road, Shirley, NY 11967, USA