

Recombinant Human CALR Protein, Myc/DDK-tagged, C13 and N15-labeled

Cat. No. CALR-2764H **Lot. No.** (See product label)

SPECIFICATION

Product Overview

CALR MS Standard C13 and N15-labeled recombinant protein (NP_004334) with a C-terminal MYC/DDK tag, was expressed in HEK293 cells.

Species

Human

Source

HEK293

Description

Calreticulin is a highly conserved chaperone protein which resides primarily in the endoplasmic reticulum, and is involved in a variety of cellular processes, among them, cell adhesion. Additionally, it functions in protein folding quality control and calcium homeostasis. Calreticulin is also found in the nucleus, suggesting that it may have a role in transcription regulation. Systemic lupus erythematosus is associated with increased autoantibody titers against calreticulin. Recurrent mutations in calreticulin have been linked to various neoplasms, including the myeloproliferative type.

Molecular Mass

48.1 kDa

AA Sequence

MLLSVPLLLGLLGLAVAEPVYFKEQFLDGDGWTSRWIESKHKSDFGKFLSSGKFY
 GDEEKDKGLQTSQDARFYALSASFEPFSNKGQTLVVQFTVKHEQNIDCGGGYVKLF
 PNSLDQTDMHGDSEYNIMFGPDICGPGTKKVHVIFNYKGNVLINKDIRCKDDEFTH
 LYTLIVRPDNTYEVKIDNSQVESGSLEDDWDFLPPKKIKDPDASKPEDWDERAKIDD
 PTDSKPEDWDKPEHIPDPDAKKPEDWDEEMDGEWEPPIQNPEYKGEWKPRQIDN
 PDYKGTWIHPEIDNPEYSPDPSIYAYDNFGVLGLDLWQVKSGTIFDNFLITNDEAYAE

 Tel: 1-631-559-9269 1-516-512-3133

 Email: info@creative-biomart.com  Fax: 1-631-938-8127

 45-1 Ramsey Road, Shirley, NY 11967, USA

EFGNETWGVTKAAEKQMKDKQDEEQRLKEEEEEDKKRKEEEEAEDKEDDEDKDED
EEDEEDKEEEDVEEDVPGQAKDELTRTRPLEQKLISEEDLAANDILDYKDDDDKV

Purity > 80% as determined by SDS-PAGE and Coomassie blue staining

Stability Stable for 3 months from receipt of products under proper storage and handling conditions.

Storage Store at -80 centigrade. Avoid repeated freeze-thaw cycles.

Concentration 50 µg/mL as determined by BCA

Storage Buffer 100 mM glycine, 25 mM Tris-HCl, pH 7.3.

GENE INFORMATION

Gene Name CALR calreticulin [Homo sapiens (human)]

Official Symbol CALR

Synonyms CALR; calreticulin; autoantigen Ro; cC1qR; CRT; FLJ26680; RO; Sicca syndrome antigen A (autoantigen Ro; calreticulin); SSA; CRP55; ERp60; HACBP; grp60; calregulin; endoplasmic reticulum resident protein 60; Sicca syndrome antigen A (autoantigen Ro; calreticulin);

Gene ID 811

mRNA Refseq NM_004343

Protein Refseq NP_004334

 Tel: 1-631-559-9269 1-516-512-3133

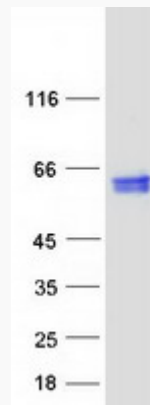
 Email: info@creative-biomart.com  Fax: 1-631-938-8127

 45-1 Ramsey Road, Shirley, NY 11967, USA

MIM 109091

UniProt ID P27797

SDS-PAGE



 Tel: 1-631-559-9269 1-516-512-3133

 Email: info@creative-biomart.com  Fax: 1-631-938-8127

 45-1 Ramsey Road, Shirley, NY 11967, USA