

Recombinant Human CALR protein, His&Flag-tagged

Cat. No. CALR-5643H Lot. No. (See product label)

SPECIFICATION

Product Overview	Recombinant Human CALR protein(P27797)(18-417aa), fused with N-terminal His tag and C-terminal Flag tag, was expressed in HEK293.
Species	Human
Source	HEK293
ProteinLength	18-417aa
Tag	N-His&C-Flag
Form	If the delivery form is liquid, the default storage buffer is Tris/PBS-based buffer, 5%-50% glycerol. If the delivery form is lyophilized powder, the buffer before lyophilization is Tris/PBS-based buffer, 6% Trehalose, pH 8.0.
Molecular Mass	50.8 kDa
Purity	Greater than 90% as determined by SDS-PAGE. Greater than 90% as determined by SEC-HPLC.
Storage	Store at -20°C/-80°C upon receipt, aliquoting is necessary for mutiple use. Avoid repeated freeze-thaw cycles.
Reconstitution	We recommend that this vial be briefly centrifuged prior to opening to bring the contents to the bottom. Please reconstitute protein in deionized sterile water to a

 Tel: 1-631-559-9269 1-516-512-3133

 Email: info@creative-biomart.com  Fax: 1-631-938-8127

 45-1 Ramsey Road, Shirley, NY 11967, USA

concentration of 0.1-1.0 mg/mL. We recommend to add 5-50% of glycerol (final concentration) and aliquot for long-term storage at -20°C/-80°C.

AA Sequence

EPAVYFKEQFLDGDGWTSRWIESKHKSDFGKFLVSSGKFGDEEKDKGLQTSQDA
 RFYALSASFEPFSNKGQTLVVQFTVKHEQNIDCGGGYVKLFPNSLDQTDMHGDSEY
 NIMFGPDICGPGTKKVHVIFNYKGKNVLINKDIRCKDDEFTHLYTLIVRPDNTYEVKID
 NSQVESGSLEDDWDFLPPKKIKDPDASKPEDWDERAKIDDPTDSKPEDWDKPEHIP
 DPDAKKPEDWDEEMDGEWEPPVIQNPEYKGEWKPRQIDNPDYKGTWIHPEIDNPE
 YSPDPSIYAYDNFGVLGLDLWQVKS GTIFDNFLITNDEAYAEFGNETWGVTKAAEK
 QMKDKQDEEQRLKEEEEEDKKRKEEEEAEDKEDDEDKDEDEEDEDKEEDEEEDV
 P
 GQAKDEL

GENE INFORMATION

Gene Name [CALR calreticulin \[Homo sapiens \]](#)

Official Symbol [CALR](#)

Synonyms

CALR; calreticulin; autoantigen Ro; cC1qR; CRT; FLJ26680; RO; Sicca syndrome antigen A (autoantigen Ro; calreticulin); SSA; CRP55; ERp60; HACBP; grp60; calregulin; endoplasmic reticulum resident protein 60; Sicca syndrome antigen A (autoantigen Ro; calreticulin);

Gene ID [811](#)

mRNA Refseq [NM_004343](#)

Protein Refseq [NP_004334](#)

MIM [109091](#)

 Tel: 1-631-559-9269 1-516-512-3133

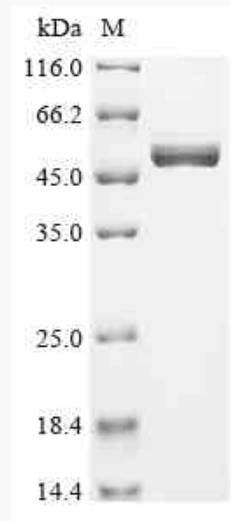
 Email: info@creative-biomart.com  Fax: 1-631-938-8127

 45-1 Ramsey Road, Shirley, NY 11967, USA

UniProt ID

P27797

SDS-PAGE



 Tel: 1-631-559-9269 1-516-512-3133

 Email: info@creative-biomart.com  Fax: 1-631-938-8127

 45-1 Ramsey Road, Shirley, NY 11967, USA