

## Recombinant Human CALR3 Protein, GST-Tagged

Cat. No. CALR3-0314H Lot. No. (See product label)

### SPECIFICATION

**Product Overview** Human CALR3 full-length ORF (AAH14595, 21 a.a. - 384 a.a.) recombinant protein with GST-tag at N-terminal.

**Species** Human

**Source** Wheat Germ

**Description** The protein encoded by this gene belongs to the calreticulin family, members of which are calcium-binding chaperones localized mainly in the endoplasmic reticulum. This protein is also localized to the endoplasmic reticulum lumen, however, its capacity for calcium-binding may be absent or much lower than other family members. This gene is specifically expressed in the testis, and may be required for sperm fertility. Mutation in this gene has been associated with familial hypertrophic cardiomyopathy. [provided by RefSeq, Dec 2011]

**Molecular Mass** 65.78 kDa

**AA Sequence**

```
VYFQEEFLDGEHWRNRWLQSTNDSRFGHFRLSSGKFGYGHKEKDKGLQTTQNGRF
YAISARFKPFSNKGKTLVIQYTVKHEQKMDCGGGYIKVFPADIDQKNLNGKSQYYIMF
GPDICGFDIKKVHVLHFKNKYHENKKLIRCKVDGFTHLYTLILRPDLSYDVKIDGQSIE
SGSIEYDWNLTSLKKETSPAESKDWEQTKDNKAQDWEKHFLDASTSKQSDWNGDL
DGDWPAPMLQKPPYQDGLKPEGIHKDVWLHRKMKNTDYLTQYDLSEFENIGAIGLE
LWQVRSGETIFDNFLITDDEEYADNFGKATWGETKGPAREMDAIQAKEEMKKAREEE
EEELLSGKINRHEHYFNQFHRRNEL
```

 Tel: 1-631-559-9269 1-516-512-3133

 Email: [info@creative-biomart.com](mailto:info@creative-biomart.com)  Fax: 1-631-938-8127

 45-1 Ramsey Road, Shirley, NY 11967, USA



<b>Applications</b>	Enzyme-linked Immunoabsorbent Assay Western Blot (Recombinant protein) Antibody Production Protein Array
<b>Notes</b>	Best use within three months from the date of receipt of this protein.
<b>Storage</b>	Store at -80 centigrade. Aliquot to avoid repeated freezing and thawing.
<b>Storage Buffer</b>	50 mM Tris-HCl, 10 mM reduced Glutathione, pH=8.0 in the elution buffer.

## GENE INFORMATION

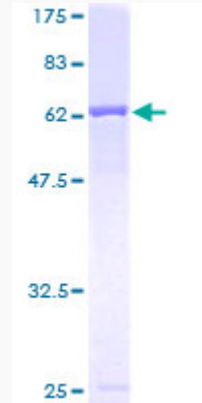
<b>Gene Name</b>	CALR3 calreticulin 3 [ Homo sapiens ]
<b>Official Symbol</b>	CALR3
<b>Synonyms</b>	CALR3; calreticulin 3; calreticulin-3; calsperin; cancer/testis antigen 93; CRT2; CT93; FLJ25355; MGC26577; calreticulin-2; CMH19;
<b>Gene ID</b>	125972
<b>mRNA Refseq</b>	NM_145046
<b>Protein Refseq</b>	NP_659483
<b>MIM</b>	611414
<b>UniProt ID</b>	Q96L12

Tel: 1-631-559-9269 1-516-512-3133

Email: [info@creative-biomart.com](mailto:info@creative-biomart.com) Fax: 1-631-938-8127

45-1 Ramsey Road, Shirley, NY 11967, USA

**Quality Control  
Testing**



12.5% SDS-PAGE Stained with Coomassie Blue.

 Tel: 1-631-559-9269 1-516-512-3133

 Email: [info@creative-biomart.com](mailto:info@creative-biomart.com)  Fax: 1-631-938-8127

 45-1 Ramsey Road, Shirley, NY 11967, USA