

Recombinant Human CALU Protein, GST-Tagged

Cat. No. CALU-0315H Lot. No. (See product label)

SPECIFICATION

Product Overview	Human CALU full-length ORF (NP_001210.1, 1 a.a. - 315 a.a.) recombinant protein with GST-tag at N-terminal.
Species	Human
Source	Wheat Germ
Description	The product of this gene is a calcium-binding protein localized in the endoplasmic reticulum (ER) and it is involved in such ER functions as protein folding and sorting. This protein belongs to a family of multiple EF-hand proteins (CERC) that include reticulocalbin, ERC-55, and Cab45 and the product of this gene. Alternatively spliced transcript variants encoding different isoforms have been identified. [provided by RefSeq, Oct 2008]
Molecular Mass	63.5 kDa
AA Sequence	MDLRQFLMCLSLCTAFALSKPTEKKDRVHHEPQLSDKVHNDASFDYDHDFAFLGAE EAKTFDQLTPPEESKERLGKIVSKIDGDKDGFVTVDELKDWIKFAQKRWIYEDVERQW KGHDLNEDGLVSWEEYKNATYGYVLDDPDPDDGFNYKQMMVRDERFRKMDKDG DLIATKEEFTAFLHPEEYDYMKDIVVQETMEDIDKNADGFIDLEEYIGDMYSHDGNTD EPEWVKTEREQFVEFRDKNRDGKMDKEETKDWILPSDYDHAEAEARHLVYESDQN KDGKLTKEEIVDKYDLFVGSQATDFGEALVRHDEF
Applications	Enzyme-linked Immunoabsorbent Assay Western Blot (Recombinant protein)

 Tel: 1-631-559-9269 1-516-512-3133

 Email: info@creative-biomart.com  Fax: 1-631-938-8127

 45-1 Ramsey Road, Shirley, NY 11967, USA



	Antibody Production Protein Array
Notes	Best use within three months from the date of receipt of this protein.
Storage	Store at -80 centigrade. Aliquot to avoid repeated freezing and thawing.
Storage Buffer	50 mM Tris-HCl, 10 mM reduced Glutathione, pH=8.0 in the elution buffer.

GENE INFORMATION

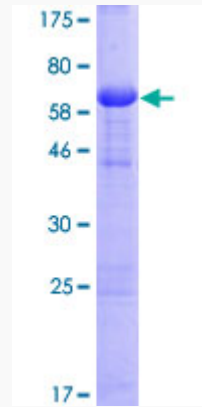
Gene Name	CALU calumenin [Homo sapiens]
Official Symbol	CALU
Synonyms	CALU; calumenin; crocalbin; IEF SSP 9302; crocalbin-like protein; multiple EF-hand protein; FLJ90608;
Gene ID	813
mRNA Refseq	NM_001130674
Protein Refseq	NP_001124146
MIM	603420
UniProt ID	O43852

Tel: 1-631-559-9269 1-516-512-3133

Email: info@creative-biomart.com Fax: 1-631-938-8127

45-1 Ramsey Road, Shirley, NY 11967, USA

**Quality Control
Testing**



12.5% SDS-PAGE Stained with Coomassie Blue.

 Tel: 1-631-559-9269 1-516-512-3133

 Email: info@creative-biomart.com  Fax: 1-631-938-8127

 45-1 Ramsey Road, Shirley, NY 11967, USA