

Recombinant Human CALU Protein (20-315aa)

Cat. No. CALU-11H Lot. No. (See product label)

SPECIFICATION

Product Overview Recombinant human Calumenin protein (20-315aa) without tag was expressed in E. coli and purified by using conventional chromatography.

Species Human

Source E.coli

ProteinLength 20-315aa

Description The product of this gene is a calcium-binding protein localized in the endoplasmic reticulum (ER) and it is involved in such ER functions as protein folding and sorting. This protein belongs to a family of multiple EF-hand proteins (CERC) that include reticulocalbin, ERC-55, and Cab45 and the product of this gene. Alternatively spliced transcript variants encoding different isoforms have been identified.

Form Liquid

Molecular Mass 35 kDa (297aa) confirmed by MALDI-TOF

AA Sequence

```

MKPTEKKDRVHHEPQLSDKVHNDQAQSFYDHDFAFLGAEAAKTFDQLTPEESKERL
GKIVSKIDGDKDGFVTVDLKDVIKFAQKRWIYEDVERQWKGHDLNEDGLVSWEEY
KNATYGYVLDDPDPDDGFNYKQMMVRDERRFKMADKDGDLIATKEEFTAFHPEEY
DYMKDIVVQETMEDIDKNADGFIDLEEYIGDMYSHDGNTDEPEWVKTEREQFVEFR
DKNRDGMKDKEETKDWILPSDYDHAEAEARHLVYESDQNKDGKLTKEEIVDKYDLF
VGSQATDFGEALVRHDEF
    
```

 Tel: 1-631-559-9269 1-516-512-3133

 Email: info@creative-biomart.com  Fax: 1-631-938-8127

 45-1 Ramsey Road, Shirley, NY 11967, USA

Purity	> 90% by SDS-PAGE
Applications	SDS-PAGE
Storage	Can be stored at +2 to +8 centigrade for 1 week. For long term storage, aliquot and store at -20 to -80 centigrade. Avoid repeated freezing and thawing cycles.
Concentration	0.5 mg/mL (determined by absorbance at 280nm)
Storage Buffer	Phosphate-Buffered Saline (pH 7.4) containing 10% glycerol

GENE INFORMATION

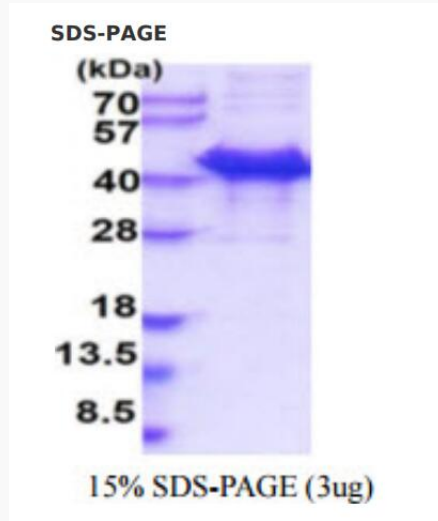
Gene Name	CALU calumenin [Homo sapiens (human)]
Official Symbol	CALU
Synonyms	CALU; calumenin; calumenin; IEF SSP 9302; crocalbin-like protein; multiple EF-hand protein
Gene ID	813
mRNA Refseq	NM_001219
Protein Refseq	NP_001210
MIM	603420
UniProt ID	O43852

 Tel: 1-631-559-9269 1-516-512-3133

 Email: info@creative-biomart.com  Fax: 1-631-938-8127

 45-1 Ramsey Road, Shirley, NY 11967, USA

SDS-PAGE



 Tel: 1-631-559-9269 1-516-512-3133

 Email: info@creative-biomart.com  Fax: 1-631-938-8127

 45-1 Ramsey Road, Shirley, NY 11967, USA