

# Recombinant Human CALU Protein, Myc/DDK-tagged, C13 and N15-labeled

**Cat. No.** CALU-1594H    **Lot. No.** (See product label)

## SPECIFICATION

<b>Product Overview</b>	CALU MS Standard C13 and N15-labeled recombinant protein (NP_001210) with a C-terminal MYC/DDK tag, was expressed in HEK293 cells.
<b>Species</b>	Human
<b>Source</b>	HEK293
<b>Description</b>	<p>The product of this gene is a calcium-binding protein localized in the endoplasmic reticulum (ER) and it is involved in such ER functions as protein folding and sorting.</p> <p>This protein belongs to a family of multiple EF-hand proteins (CERC) that include reticulocalbin, ERC-55, and Cab45 and the product of this gene. Alternatively spliced transcript variants encoding different isoforms have been identified.</p>
<b>Molecular Mass</b>	37.1 kDa
<b>AA Sequence</b>	<p>MDLRQFLMCLSLCTAFALSKPTEKKDRVHHEPQLSDKVHNDQAQSFYDHDHDAFLGAE  EAKTFDQLTPPEESKERLGKIVSKIDGDKDGFVTVDELKDWIKFAQKRWIYEDVERQW  KGHDLNEDGLVSWEEYKNATYGYVLDDPDPDDGFNYKQMMVRDERFRKMDKDG  DLIATKEEFTAFLHPEEYDYMKDIVVQETMEDIDKNADGFIDLEEYIGDMYSHDGNTD  EPEWVKTEREQFVEFRDKNRDGMKDKETKDWILPSDYDHAEAEARHLVYESDQN  KDGKLTKEEIVDKYDLFVGSQATDFGEALVRHDEFTRTRPLEQKLISEEDLAANDILD  YKDDDDKV</p>
<b>Purity</b>	> 80% as determined by SDS-PAGE and Coomassie blue staining

 Tel: 1-631-559-9269    1-516-512-3133

 Email: [info@creative-biomart.com](mailto:info@creative-biomart.com)     Fax: 1-631-938-8127

 45-1 Ramsey Road, Shirley, NY 11967, USA



<b>Stability</b>	Stable for 3 months from receipt of products under proper storage and handling conditions.
<b>Storage</b>	Store at -80 centigrade. Avoid repeated freeze-thaw cycles.
<b>Concentration</b>	50 µg/mL as determined by BCA
<b>Storage Buffer</b>	100 mM glycine, 25 mM Tris-HCl, pH 7.3.

## GENE INFORMATION

<b>Gene Name</b>	CALU calumenin [ Homo sapiens (human) ]
<b>Official Symbol</b>	CALU
<b>Synonyms</b>	CALU; calumenin; crocalbin; IEF SSP 9302; crocalbin-like protein; multiple EF-hand protein; FLJ90608;
<b>Gene ID</b>	813
<b>mRNA Refseq</b>	NM_001219
<b>Protein Refseq</b>	NP_001210
<b>MIM</b>	603420
<b>UniProt ID</b>	O43852

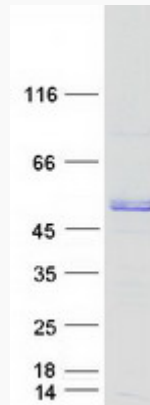
Tel: 1-631-559-9269 1-516-512-3133

Email: [info@creative-biomart.com](mailto:info@creative-biomart.com) Fax: 1-631-938-8127

45-1 Ramsey Road, Shirley, NY 11967, USA



SDS-PAGE



Tel: 1-631-559-9269 1-516-512-3133

Email: [info@creative-biomart.com](mailto:info@creative-biomart.com) Fax: 1-631-938-8127

45-1 Ramsey Road, Shirley, NY 11967, USA