

# Recombinant Human CALY Protein, MYC/DDK-tagged, C13 and N15-labeled

**Cat. No.** CALY-411H    **Lot. No.** (See product label)

## SPECIFICATION

<b>Product Overview</b>	CALY MS Standard C13 and N15-labeled recombinant protein (NP_056537) with a C-terminal MYC/DDK tag, was expressed in HEK293 cells.
<b>Species</b>	Human
<b>Source</b>	HEK293
<b>Description</b>	The protein encoded by this gene is a type II single transmembrane protein. It is required for maximal stimulated calcium release after stimulation of purinergic or muscarinic but not beta-adrenergic receptors. The encoded protein interacts with D1 dopamine receptor and may interact with other DA receptor subtypes and/or GPCRs. [provided by RefSeq, Jul 2008]
<b>Molecular Mass</b>	23.4 kDa
<b>AA Sequence</b>	MVKLGCSFSGKPGKDPGDQDGAAMDSVPLISPLDISQLQPPLPDQVVIKTQTEYQLS SPDQQNFPDLEGQRLNCSHP EEGRRLLPTARMIAFAMALLGCVLIMYKAIWYDQFTC PDGFLLRHKICTPLTLEMYYTEMDPERHRSILAAIGAYPLSRKHGTETPAAWGDGYR AAKEERKGPTQAGAAAAATEPPGKPSAKAEKEAARKAAGSAAPPPAQRTRTRPLEQK LISEEDLAANDILDYKDDDDKV
<b>Purity</b>	> 80% as determined by SDS-PAGE and Coomassie blue staining
<b>Stability</b>	Stable for 3 months from receipt of products under proper storage and handling

 Tel: 1-631-559-9269    1-516-512-3133

 Email: [info@creative-biomart.com](mailto:info@creative-biomart.com)     Fax: 1-631-938-8127

 45-1 Ramsey Road, Shirley, NY 11967, USA

conditions.

**Storage** Store at -80 centigrade. Avoid repeated freeze-thaw cycles.

**Concentration** 50 µg/mL as determined by BCA

**Storage Buffer** 100 mM glycine, 25 mM Tris-HCl, pH 7.3.

## GENE INFORMATION

**Gene Name** CALY calcyon neuron-specific vesicular protein [ Homo sapiens (human) ]

**Official Symbol** CALY

**Synonyms** CALY; calcyon neuron-specific vesicular protein; dopamine receptor D1 interacting protein, DRD1IP; neuron-specific vesicular protein calcyon; CALCYON; NSG3; calcyon protein; D1 dopamine receptor-interacting protein; dopamine receptor D1 interacting protein; calcyon D1 dopamine receptor-interacting protein (CALCYON); DRD1IP; RP11-122K13.5;

**Gene ID** 50632

**mRNA Refseq** NM\_015722

**Protein Refseq** NP\_056537

**MIM** 604647

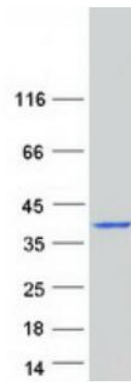
**UniProt ID** Q9NYX4

 Tel: 1-631-559-9269 1-516-512-3133

 Email: [info@creative-biomart.com](mailto:info@creative-biomart.com)  Fax: 1-631-938-8127

 45-1 Ramsey Road, Shirley, NY 11967, USA

**SDS-PAGE**



 Tel: 1-631-559-9269 1-516-512-3133

 Email: [info@creative-biomart.com](mailto:info@creative-biomart.com)  Fax: 1-631-938-8127

 45-1 Ramsey Road, Shirley, NY 11967, USA