

Active Recombinant Human CAMK1 Protein, GST-Tagged

Cat. No. CAMK1-0317H Lot. No. (See product label)

SPECIFICATION

Product Overview	Human CAMK1 (Q14012) full-length recombinant protein with GST tag expressed in Sf9 cells.
Species	Human
Source	Insect Cells
Description	Calcium/calmodulin-dependent protein kinase I is expressed in many tissues and is a component of a calmodulin-dependent protein kinase cascade. Calcium/calmodulin directly activates calcium/calmodulin-dependent protein kinase I by binding to the enzyme and indirectly promotes the phosphorylation and synergistic activation of the enzyme by calcium/calmodulin-dependent protein kinase I kinase. [provided by RefSeq, Jul 2008]
Form	Liquid
Bio-activity	138 nmol phosphate incorporated into Autocamide 2 per minute per mg protein at 30 centigrade for 15 minutes using a final concentration of 50 μ M ATP (0.83 uCi/assay).
Molecular Mass	60 kDa
Purity	\geq 90% by SDS-PAGE
Applications	Functional Study SDS-PAGE

 Tel: 1-631-559-9269 1-516-512-3133

 Email: info@creative-biomart.com  Fax: 1-631-938-8127

 45-1 Ramsey Road, Shirley, NY 11967, USA

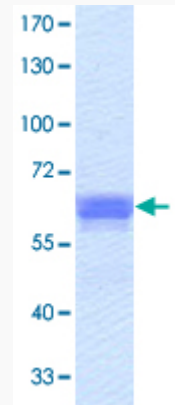
Storage	Store at -80 centigrade. Aliquot to avoid repeated freezing and thawing.
Storage Buffer	In 50 mM Tris-HCl, 150 mM NaCl, pH 7.5 (0.25 mM Dithiothreitol, 0.1 mM EGTA, 0.1 mM EDTA, 25% glycerol, 0.1 mM PMSF)
GENE INFORMATION	
Gene Name	CAMK1 calcium/calmodulin-dependent protein kinase I [Homo sapiens]
Official Symbol	CAMK1
Synonyms	CAMK1; calcium/calmodulin-dependent protein kinase I; calcium/calmodulin-dependent protein kinase type 1; CaMKI; caM-KI; caMKI-alpha; caM kinase I alpha; CAMKI; MGC120317; MGC120318;
Gene ID	8536
mRNA Refseq	NM_003656
Protein Refseq	NP_003647
MIM	604998
UniProt ID	Q14012

 Tel: 1-631-559-9269 1-516-512-3133

 Email: info@creative-biomart.com  Fax: 1-631-938-8127

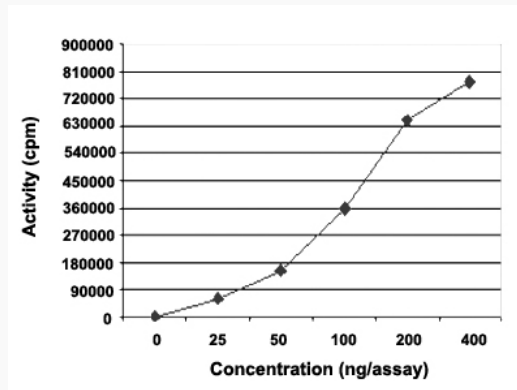
 45-1 Ramsey Road, Shirley, NY 11967, USA

**Quality Control
Testing**



1 µg/lane SDS-PAGE Stained with Coomassie Blue

**Result of activity
analysis**



 Tel: 1-631-559-9269 1-516-512-3133

 Email: info@creative-biomart.com  Fax: 1-631-938-8127

 45-1 Ramsey Road, Shirley, NY 11967, USA