

## Recombinant Human CAMK1 Protein, GST-Tagged

**Cat. No.** CAMK1-0320H    **Lot. No.** (See product label)

### SPECIFICATION

<b>Product Overview</b>	Human CAMK1 full-length ORF (NP_003647.1, 1 a.a. - 370 a.a.) recombinant protein with GST-tag at N-terminal.
<b>Species</b>	Human
<b>Source</b>	Wheat Germ
<b>Description</b>	Calcium/calmodulin-dependent protein kinase I is expressed in many tissues and is a component of a calmodulin-dependent protein kinase cascade. Calcium/calmodulin directly activates calcium/calmodulin-dependent protein kinase I by binding to the enzyme and indirectly promotes the phosphorylation and synergistic activation of the enzyme by calcium/calmodulin-dependent protein kinase I kinase. [provided by RefSeq, Jul 2008]
<b>Molecular Mass</b>	66.33 kDa
<b>AA Sequence</b>	MLGAVEGPRWKQAEDIRDIYDFRDVLGTGAFSEVILAEDKRTQKLVAIKCIAKEALEG KEGSMENEIAVLHKIKHPNIVALDDIYESGGHLYLIMQLVSGGELFDRIVEKGFYTERD ASRLIFQVLDAVKYLHDLGIVHRDLKPENLLYSLDEDSKIMISDFGLSKMEDPGSVLS TACGTPGYVAPEVLAQKPYSKAVDCWSIGVIAYILLCGYPPFYDENDAKLFEQILKAE YEFDSPYWDDISDSAKDFIRHLMEKDPEKRFTCEQALQHPWIAGDTALDKNIHQSVS EQIKKNFAKSKWKQAFNATAVVRHMRKLQLGTSQEGQGQTASHGELLTPVAGGPA AGCCCRDCCVEPGTELSPTLPHQL
<b>Applications</b>	Enzyme-linked Immunoabsorbent Assay

 Tel: 1-631-559-9269    1-516-512-3133

 Email: [info@creative-biomart.com](mailto:info@creative-biomart.com)     Fax: 1-631-938-8127

 45-1 Ramsey Road, Shirley, NY 11967, USA

Western Blot (Recombinant protein)  
 Antibody Production  
 Protein Array

<b>Notes</b>	Best use within three months from the date of receipt of this protein.
<b>Storage</b>	Store at -80 centigrade. Aliquot to avoid repeated freezing and thawing.
<b>Storage Buffer</b>	50 mM Tris-HCl, 10 mM reduced Glutathione, pH=8.0 in the elution buffer.

## GENE INFORMATION

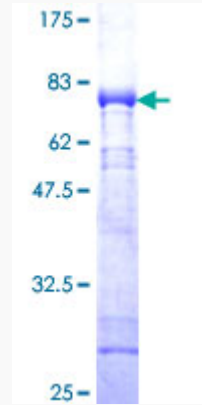
<b>Gene Name</b>	CAMK1 calcium/calmodulin-dependent protein kinase I [ Homo sapiens ]
<b>Official Symbol</b>	CAMK1
<b>Synonyms</b>	CAMK1; calcium/calmodulin-dependent protein kinase I; calcium/calmodulin-dependent protein kinase type 1; CaMKI; caM-KI; caMKI-alpha; caM kinase I alpha; CAMKI; MGC120317; MGC120318;
<b>Gene ID</b>	8536
<b>mRNA Refseq</b>	NM_003656
<b>Protein Refseq</b>	NP_003647
<b>MIM</b>	604998
<b>UniProt ID</b>	Q14012

 Tel: 1-631-559-9269 1-516-512-3133

 Email: [info@creative-biomart.com](mailto:info@creative-biomart.com)  Fax: 1-631-938-8127

 45-1 Ramsey Road, Shirley, NY 11967, USA

**Quality Control  
Testing**



12.5% SDS-PAGE Stained with Coomassie Blue.

 Tel: 1-631-559-9269 1-516-512-3133

 Email: [info@creative-biomart.com](mailto:info@creative-biomart.com)  Fax: 1-631-938-8127

 45-1 Ramsey Road, Shirley, NY 11967, USA