

Recombinant Human CAMK1 Protein (Met1-Leu370), C-His tagged

Cat. No. CAMK1-0827H Lot. No. (See product label)

SPECIFICATION

Product Overview	Recombinant human CAMK1 (Met1-Leu370) fused with the C-terminal His tag was expressed in Mammalian cells.
Species	Human
Source	Mammalian Cells
ProteinLength	Met1-Leu370
Form	Lyophilized powder/frozen liquid
Molecular Mass	40.7 kDa
Purity	>90% as determined by SDS-PAGE.
Notes	For research use only.
Storage	Use a manual defrost freezer and avoid repeated freeze thaw cycles. Store at 2 to 8 centigrade for one week. Store at -20 to -80 centigrade for twelve months from the date of receipt.
Storage Buffer	Supplied as solution form in PBS or lyophilized from PBS.
Reconstitution	Reconstitute in sterile water for a stock solution.

 Tel: 1-631-559-9269 1-516-512-3133

 Email: info@creative-biomart.com  Fax: 1-631-938-8127

 45-1 Ramsey Road, Shirley, NY 11967, USA

Shipping They are shipped out with dry ice/blue ice unless customers require otherwise.

GENE INFORMATION

Gene Name	CAMK1 calcium/calmodulin-dependent protein kinase I [Homo sapiens (human)]
Official Symbol	CAMK1
Synonyms	CAMK1; calcium/calmodulin-dependent protein kinase I; calcium/calmodulin-dependent protein kinase type 1; CaMKI; caM-KI; caMKI-alpha; caM kinase I alpha; CAMKI; MGC120317; MGC120318;
Gene ID	8536
mRNA Refseq	NM_003656
Protein Refseq	NP_003647
MIM	604998
UniProt ID	Q14012

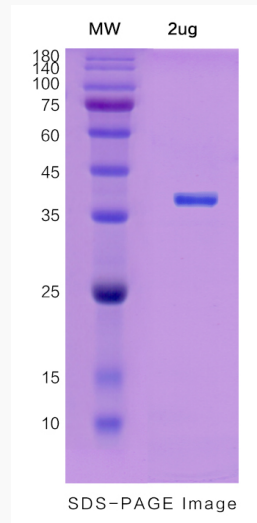
 Tel: 1-631-559-9269 1-516-512-3133

 Email: info@creative-biomart.com  Fax: 1-631-938-8127

 45-1 Ramsey Road, Shirley, NY 11967, USA



SDS-PAGE



Tel: 1-631-559-9269 1-516-512-3133

Email: info@creative-biomart.com Fax: 1-631-938-8127

45-1 Ramsey Road, Shirley, NY 11967, USA