

# Recombinant Full Length Human CAMK1 Protein, C-Flag-tagged

**Cat. No.** CAMK1-1541HFL    **Lot. No.** (See product label)

## SPECIFICATION

|                         |  |
|-------------------------|--|
| <b>Product Overview</b> | Recombinant Full Length Human CAMK1 Protein, fused to Flag-tag at C-terminus, was expressed in Mammalian cells.  |
| <b>Species</b>          | Human  |
| <b>Source</b>           | Mammalian Cells  |
| <b>Description</b>      | Calcium/calmodulin-dependent protein kinase I is expressed in many tissues and is a component of a calmodulin-dependent protein kinase cascade. Calcium/calmodulin directly activates calcium/calmodulin-dependent protein kinase I by binding to the enzyme and indirectly promotes the phosphorylation and synergistic activation of the enzyme by calcium/calmodulin-dependent protein kinase I kinase. |
| <b>Form</b>             | 25 mM Tris HCl, pH 7.3, 100 mM glycine, 10% glycerol.  |
| <b>Molecular Mass</b>   | 41.2 kDa   |
| <b>AA Sequence</b>      | MLGAVEGPRWKQAEDIRDIYDFRDVLGTGAFSEVILAEDKRTQKLVAIKCIAKEALEG<br>KEGSMENEIAVL HKIKHPNIVALDDIYESGGHLYLIMQLVSGGELFDRIVEKGFYTER<br>DASRLIFQVLDAVKYLHDLGIVHR DLKPENLLYSLDEDSKIMISDFGLSKMEDPGSV<br>LSTACGTPGYVAPEVLAQKPYSKAVDCWSIGVIAYI LLCGYPPFYDENDAKLFEQILK<br>AEYEFDSPYWDDISDSAKDFIRHLMKEDPEKRFTCEQALQHPWIAGDT ALDKNIHQ<br>SVSEIQIKKNFAKSKWKQAFNATAVVRHMRKLQLGTSQEGQGQTASHGELLTPVAG<br>GPAAGCC                 |

 Tel: 1-631-559-9269    1-516-512-3133

 Email: [info@creative-biomart.com](mailto:info@creative-biomart.com)     Fax: 1-631-938-8127

 45-1 Ramsey Road, Shirley, NY 11967, USA

CRDCCVEPGTELSPTLPHQLTRTRPLEQKLISEEDLAANDILDYKDDDDKV

**Purity** > 80% as determined by SDS-PAGE and Coomassie blue staining.

**Stability** Stable for 12 months from the date of receipt of the product under proper storage and handling conditions. Avoid repeated freeze-thaw cycles.

**Storage** Store at -80 centigrade.

**Concentration** >50 ug/mL as determined by microplate BCA method.

**Preparation** Recombinant protein was captured through anti-DDK affinity column followed by conventional chromatography steps.

**Protein Families** Druggable Genome, Protein Kinase

**Full Length** Full L.

## GENE INFORMATION

**Gene Name** [CAMK1 calcium/calmodulin dependent protein kinase I \[ Homo sapiens \(human\) \]](#)

**Official Symbol** [CAMK1](#)

**Synonyms** CAMKI

**Gene ID** [8536](#)

**mRNA Refseq** [NM\\_003656.5](#)

**Protein Refseq** [NP\\_003647.1](#)

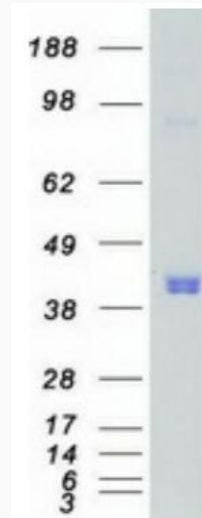
 Tel: 1-631-559-9269 1-516-512-3133

 Email: [info@creative-biomart.com](mailto:info@creative-biomart.com)  Fax: 1-631-938-8127

 45-1 Ramsey Road, Shirley, NY 11967, USA

**MIM** 604998

**UniProt ID** Q14012



Coomassie blue staining of purified CAMK1 protein.

 Tel: 1-631-559-9269 1-516-512-3133

 Email: [info@creative-biomart.com](mailto:info@creative-biomart.com)  Fax: 1-631-938-8127

 45-1 Ramsey Road, Shirley, NY 11967, USA