

## Recombinant Human CAMK1D Protein, GST-Tagged

Cat. No. CAMK1D-0322H Lot. No. (See product label)

### SPECIFICATION

<b>Product Overview</b>	Human CAMK1D full-length ORF (AAH35745, 1 a.a. - 385 a.a.) recombinant protein with GST-tag at N-terminal.
<b>Species</b>	Human
<b>Source</b>	Wheat Germ
<b>Description</b>	This gene is a member of the calcium/calmodulin-dependent protein kinase 1 family, a subfamily of the serine/threonine kinases. The encoded protein is a component of the calcium-regulated calmodulin-dependent protein kinase cascade. It has been associated with multiple processes including regulation of granulocyte function, activation of CREB-dependent gene transcription, aldosterone synthesis, differentiation and activation of neutrophil cells, and apoptosis of erythroleukemia cells. Alternatively spliced transcript variants encoding different isoforms of this gene have been described. [provided by RefSeq, Jan 2015]
<b>Molecular Mass</b>	68.09 kDa
<b>AA Sequence</b>	MARENGESSSSWKKQAEDIKKIFEFKETLGTGAFSEVVLAEKATGKLFVAVKCIKPKKALKKGKESSIENEIAVLRKIKHENIVALEDIYESPNHLYLVMQLVSGGELFDRIVEKGFYTEKDASTLIRQVLDAVYYLHRMGIVHRDLKPENLLYYSQDEESKIMISDFGLSKMEGKGDVMSTACGTPGYVAPEVLAQKPYSKAVDCWSIGVIAYILLCGYPPFYDENDSKLFEQILKAEYEFDSPYWDDISDSAKDFIRNLMEKDPNKRYTCEQAARHPWIAGDTALNKNIHESVSAQIRKNFAKSKWRQAFNATAVVRHMRKLHLGSSLDSSNASVSSLSLASQKD

 Tel: 1-631-559-9269 1-516-512-3133

 Email: [info@creative-biomart.com](mailto:info@creative-biomart.com)  Fax: 1-631-938-8127

 45-1 Ramsey Road, Shirley, NY 11967, USA



CLAPSTLCSFISSSSGVSGVGAERRPRPTTVTAVHSGSK

**Applications**

Enzyme-linked Immunoabsorbent Assay  
Western Blot (Recombinant protein)  
Antibody Production  
Protein Array

**Notes**

Best use within three months from the date of receipt of this protein.

**Storage**

Store at -80 centigrade. Aliquot to avoid repeated freezing and thawing.

**Storage Buffer**

50 mM Tris-HCl, 10 mM reduced Glutathione, pH=8.0 in the elution buffer.

**GENE INFORMATION**

**Gene Name**

[CAMK1D calcium/calmodulin-dependent protein kinase ID \[ Homo sapiens \]](#)

**Official Symbol**

[CAMK1D](#)

**Synonyms**

CAMK1D; calcium/calmodulin-dependent protein kinase ID; calcium/calmodulin-dependent protein kinase type 1D; CKLiK; caMKI delta; caM-KI delta; CaM kinase ID; caM kinase I delta; CamKI-like protein kinase; CaM-K1; CaMKID;

**Gene ID**

[57118](#)

**mRNA Refseq**

[NM\\_020397](#)

**Protein Refseq**

[NP\\_065130](#)

**MIM**

[607957](#)

Tel: 1-631-559-9269 1-516-512-3133

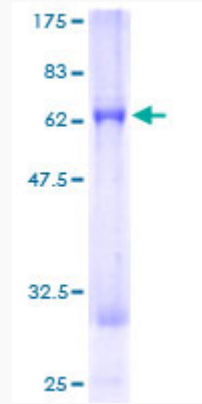
Email: [info@creative-biomart.com](mailto:info@creative-biomart.com) Fax: 1-631-938-8127

45-1 Ramsey Road, Shirley, NY 11967, USA

UniProt ID

Q8IU85

Quality Control  
Testing



12.5% SDS-PAGE Stained with Coomassie Blue.

 Tel: 1-631-559-9269 1-516-512-3133

 Email: [info@creative-biomart.com](mailto:info@creative-biomart.com)  Fax: 1-631-938-8127

 45-1 Ramsey Road, Shirley, NY 11967, USA