

Recombinant Human CAMK1D Protein (Met1-Lys385), N-Gst tagged

Cat. No. CAMK1D-0829H Lot. No. (See product label)

SPECIFICATION

Product Overview	Recombinant human CAMK1D (Met1-Lys385) fused with the N-terminal Gst tag was expressed in E. coli.
Species	Human
Source	E.coli
ProteinLength	Met1-Lys385
Form	Lyophilized powder/frozen liquid
Molecular Mass	68.35 kDa
Purity	>90% as determined by SDS-PAGE.
Notes	For research use only.
Storage	Use a manual defrost freezer and avoid repeated freeze thaw cycles. Store at 2 to 8 centigrade for one week. Store at -20 to -80 centigrade for twelve months from the date of receipt.
Storage Buffer	Supplied as solution form in PBS or lyophilized from PBS.
Reconstitution	Reconstitute in sterile water for a stock solution.

 Tel: 1-631-559-9269 1-516-512-3133

 Email: info@creative-biomart.com  Fax: 1-631-938-8127

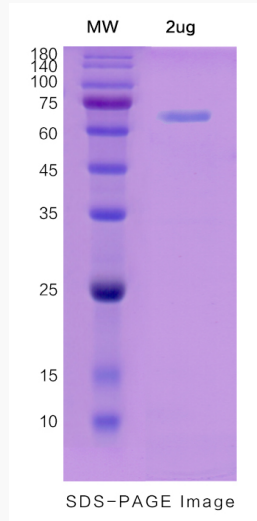
 45-1 Ramsey Road, Shirley, NY 11967, USA

Shipping

They are shipped out with dry ice/blue ice unless customers require otherwise.

GENE INFORMATION**Gene Name** CAMK1D calcium/calmodulin-dependent protein kinase ID [Homo sapiens (human)]**Official Symbol** CAMK1D**Synonyms** CAMK1D; calcium/calmodulin-dependent protein kinase ID; calcium/calmodulin-dependent protein kinase type 1D; CKLiK; caMKI delta; caM-KI delta; CaM kinase ID; caM kinase I delta; CamKI-like protein kinase; CaM-K1; CaMKID;**Gene ID** 57118**mRNA Refseq** NM_020397**Protein Refseq** NP_065130**MIM** 607957**UniProt ID** Q8IU85 Tel: 1-631-559-9269 1-516-512-3133 Email: info@creative-biomart.com  Fax: 1-631-938-8127 45-1 Ramsey Road, Shirley, NY 11967, USA

SDS-PAGE



 Tel: 1-631-559-9269 1-516-512-3133

 Email: info@creative-biomart.com  Fax: 1-631-938-8127

 45-1 Ramsey Road, Shirley, NY 11967, USA