

# Recombinant Human CAMK1D Protein, Myc/DDK-tagged, C13 and N15-labeled

**Cat. No.** CAMK1D-1975H    **Lot. No.** (See product label)

## SPECIFICATION

<b>Product Overview</b>	CAMK1D MS Standard C13 and N15-labeled recombinant protein (NP_705718) with a C-terminal MYC/DDK tag, was expressed in HEK293 cells.
<b>Species</b>	Human
<b>Source</b>	HEK293
<b>Description</b>	This gene is a member of the calcium/calmodulin-dependent protein kinase 1 family, a subfamily of the serine/threonine kinases. The encoded protein is a component of the calcium-regulated calmodulin-dependent protein kinase cascade. It has been associated with multiple processes including regulation of granulocyte function, activation of CREB-dependent gene transcription, aldosterone synthesis, differentiation and activation of neutrophil cells, and apoptosis of erythroleukemia cells. Alternatively spliced transcript variants encoding different isoforms of this gene have been described.
<b>Molecular Mass</b>	42.9 kDa
<b>AA Sequence</b>	MARENGESSSSWKKQAEDIKKIFEFKETLGTGAFSEVVLAEEKATGKLFVAVKCI PKKA LKGKESSIENEIAVLRKIKHENIVALEDIYESPNHLYLVMQLVSGGELFDRIVEKGFYTE KDASTLIRQVLDAVYYLHRMGIVHRDLKPENLLYYSQDEESKIMISDFGLSKMEGKG DVMSTACGTPGYVAPEVLAQKPYSKAVDCWSIGVIAYILLCGYPPFYDENDSKLFEQI LKAIEYEFDSPYWDDISDSAKDFIRNLMKDPNKRYTCEQAARHPWIAGDTALNKNIH

 Tel: 1-631-559-9269    1-516-512-3133

 Email: [info@creative-biomart.com](mailto:info@creative-biomart.com)     Fax: 1-631-938-8127

 45-1 Ramsey Road, Shirley, NY 11967, USA

ESVSAQIRKNFAKSKWRQAFNATAVVRHMRKLHLGSSLDSSNASVSSSLSLASQKD  
 CLAPSTLCSFISSSSGVSGVGAERRPRPTTVTAVHSGSKTRTRPLEQKLISEEDLAA  
 NDILDYKDDDDKV

**Purity** > 80% as determined by SDS-PAGE and Coomassie blue staining

**Stability** Stable for 3 months from receipt of products under proper storage and handling conditions.

**Storage** Store at -80 centigrade. Avoid repeated freeze-thaw cycles.

**Concentration** 50 µg/mL as determined by BCA

**Storage Buffer** 100 mM glycine, 25 mM Tris-HCl, pH 7.3.

## GENE INFORMATION

**Gene Name** CAMK1D calcium/calmodulin-dependent protein kinase ID [ Homo sapiens (human) ]

**Official Symbol** CAMK1D

**Synonyms** CAMK1D; calcium/calmodulin-dependent protein kinase ID; calcium/calmodulin-dependent protein kinase type 1D; CKLiK; caMKI delta; caM-KI delta; CaM kinase ID; caM kinase I delta; CamKI-like protein kinase; CaM-K1; CaMKID;

**Gene ID** 57118

**mRNA Refseq** NM\_153498

**Protein Refseq** NP\_705718

 Tel: 1-631-559-9269 1-516-512-3133

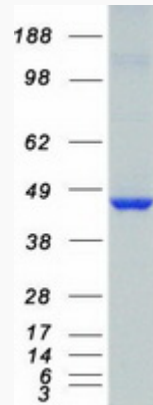
 Email: [info@creative-biomart.com](mailto:info@creative-biomart.com)  Fax: 1-631-938-8127

 45-1 Ramsey Road, Shirley, NY 11967, USA

MIM 607957

UniProt ID Q8IU85

SDS-PAGE



 Tel: 1-631-559-9269 1-516-512-3133

 Email: [info@creative-biomart.com](mailto:info@creative-biomart.com)  Fax: 1-631-938-8127

 45-1 Ramsey Road, Shirley, NY 11967, USA