

Active Recombinant Full Length Human CAMK1D Protein, GST-tagged

Cat. No. CAMK1D-5442HF **Lot. No.** (See product label)

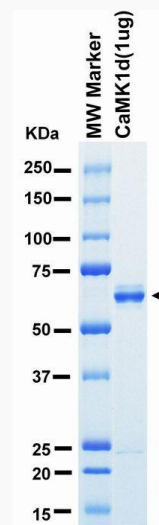
SPECIFICATION

Product Overview	Full-length human CaMK1 δ [1-357(end) amino acid of accession number NP_065130.1] was expressed as N-terminal GST-fusion protein (67 kDa) using baculovirus expression system. GST-CaMK1 δ was purified by using glutathione sepharose chromatography.
Species	Human
Source	Sf21 Cells
ProteinLength	1-357(end)
Form	50 mM Tris-HCl, 150 mM NaCl, 0.05% Brij35, 1 mM DTT, 10% glycerol, pH7.5
Bio-activity	The activity was measured by off-chip mobility shift assay. The enzyme was incubated with fluorescence-labeled substrate, Mg(or Mn)/ATP, and Ca/Calmodulin . The phosphorylated and unphosphorylated substrates were separated and detected by LabChip [™] 3000.
Purity	89%
Applications	SDS-PAGE
Storage	Store at -80C. Avoid repeating freeze-thaws.

 Tel: 1-631-559-9269 1-516-512-3133

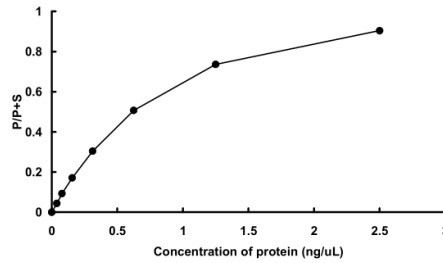
 Email: info@creative-biomart.com  Fax: 1-631-938-8127

 45-1 Ramsey Road, Shirley, NY 11967, USA

GENE INFORMATION**Gene Name** calcium/calmodulin-dependent protein kinase ID**Official Symbol** CAMK1D**Synonyms** CAMK1D;CKLiK;CaM-K1;CaMKID**Protein Refseq** [NP_065130.1](#)**UniProt ID** [Q8IU85](#)**SDS-PAGE**

The purity was assessed by SDS-PAGE/CBB staining.

 Tel: 1-631-559-9269 1-516-512-3133 Email: info@creative-biomart.com  Fax: 1-631-938-8127 45-1 Ramsey Road, Shirley, NY 11967, USA

Activity data**Activity data**

The activity was measured by off-chip mobility shift assay. The enzyme was incubated with fluorescence-labeled substrate, Mg(or Mn)/ATP, and Ca/Calmodulin . The phosphorylated and unphosphorylated substrates were separated and detected by LabChip™3000.

 Tel: 1-631-559-9269 1-516-512-3133

 Email: info@creative-biomart.com  Fax: 1-631-938-8127

 45-1 Ramsey Road, Shirley, NY 11967, USA