

## Recombinant Human CAMK1D protein, GST-tagged

Cat. No. CAMK1D-780H Lot. No. (See product label)

### SPECIFICATION

<b>Product Overview</b>	Recombinant Human CAMK1D protein(NP_705718.1) (Met 1-Lys 385) was expressed in Insect Cells, fused with the GST tag at the N-terminus.
<b>Species</b>	Human
<b>Source</b>	Insect Cells
<b>ProteinLength</b>	1-385 aa
<b>Form</b>	Supplied as sterile 50mM Tris, 100mM NaCl, 0.5mM Reduced Glutathione, pH 8.0.
<b>Bio-activity</b>	The specific activity was determined to be 70 nmol/min/mg using Autocamtide-2 synthetic peptide (KKALRRQETVDAL-amide) as substrate.
<b>Molecular Mass</b>	The recombinant human CAMK1D/GST chimera consists of 610 amino acids and predicts a molecular mass of 69 kDa. It migrates as an approximately 60 kDa band in SDS-PAGE under reducing conditions.
<b>Endotoxin</b>	< 1.0 EU per µg of the protein as determined by the LAL method.
<b>Purity</b>	> 96 % as determined by SDS-PAGE
<b>Storage</b>	Store it under sterile conditions at -20°C to -80°C upon receiving. Recommend to aliquot the protein into smaller quantities for optimal storage. Avoid repeated freeze-thaw cycles.

 Tel: 1-631-559-9269 1-516-512-3133

 Email: [info@creative-biomart.com](mailto:info@creative-biomart.com)  Fax: 1-631-938-8127

 45-1 Ramsey Road, Shirley, NY 11967, USA

**Reconstitution** It is recommended that sterile water be added to the vial to prepare a stock solution of 0.2 ug/ul. Centrifuge the vial at 4°C before opening to recover the entire contents.

## GENE INFORMATION

**Gene Name** [CAMK1D calcium/calmodulin-dependent protein kinase ID \[ Homo sapiens \]](#)

**Official Symbol** [CAMK1D](#)

**Synonyms** CAMK1D; calcium/calmodulin-dependent protein kinase ID; calcium/calmodulin-dependent protein kinase type 1D; CKLiK; caMKI delta; caM-KI delta; CaM kinase ID; caM kinase I delta; CamKI-like protein kinase; CaM-K1; CaMKID;

**Gene ID** [57118](#)

**mRNA Refseq** [NM\\_020397](#)

**Protein Refseq** [NP\\_065130](#)

**MIM** [607957](#)

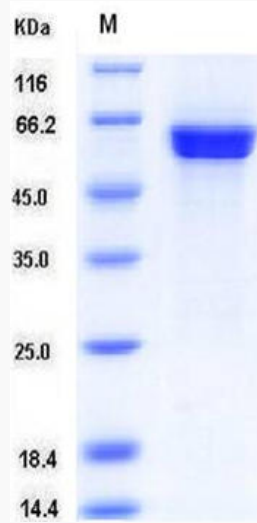
**UniProt ID** [Q8IU85](#)

 Tel: 1-631-559-9269 1-516-512-3133

 Email: [info@creative-biomart.com](mailto:info@creative-biomart.com)  Fax: 1-631-938-8127

 45-1 Ramsey Road, Shirley, NY 11967, USA

SDS-PAGE



 Tel: 1-631-559-9269 1-516-512-3133

 Email: [info@creative-biomart.com](mailto:info@creative-biomart.com)  Fax: 1-631-938-8127

 45-1 Ramsey Road, Shirley, NY 11967, USA